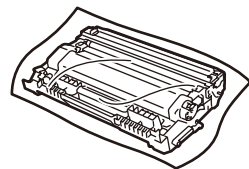
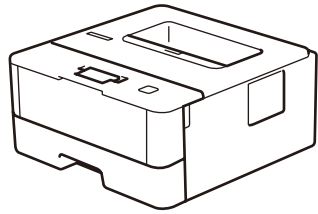
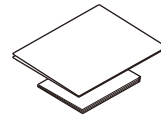


Unpack the machine and check the components



Drum Unit and Inbox Toner Cartridge



Quick Setup Guide
Product Safety Guide



Brother Installation Disc



USB Interface Cable

Operation Videos

www.95105369.com



Installation
& Using
Videos

NOTE:

- Use the appropriate interface cable for the connection you want to use. (Network cable is not a standard accessory.)

USB cable

We recommend using a USB 2.0 cable (Type A/B) that is no more than 2 metres long.

Network cable

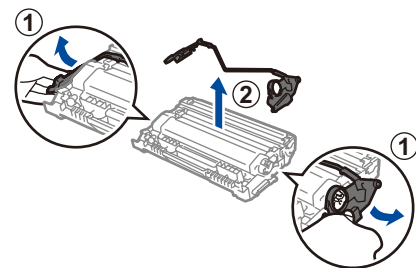
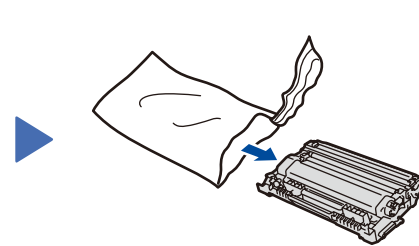
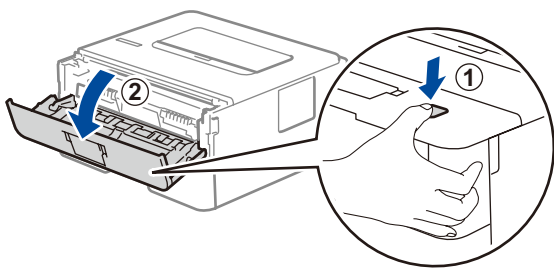
Use a straight-through Category 5 (or greater) twisted-pair cable.

- The illustrations in this *Quick Setup Guide* show the HL-2595DW.
- The *Reference Guide* is available on the provided Brother Installation Disc.

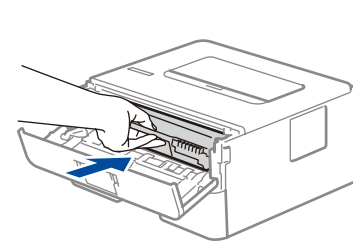
Secure Network Access

Your machine's default password is on the label on the back of the machine (preceded by "Pwd"). We strongly recommend you change it to protect your machine from unauthorised access.

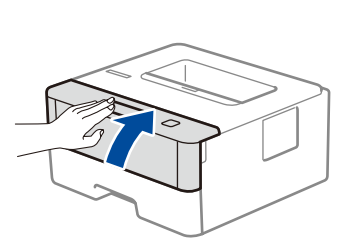
1 Remove the packing materials and install the drum unit and toner cartridge assembly



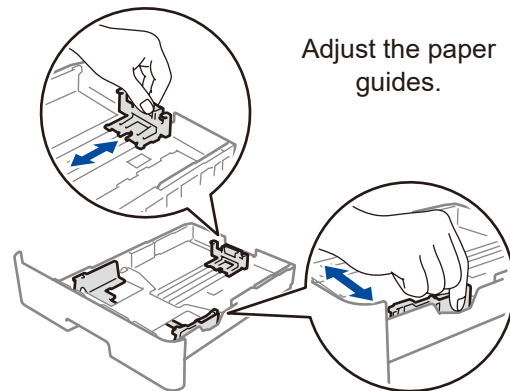
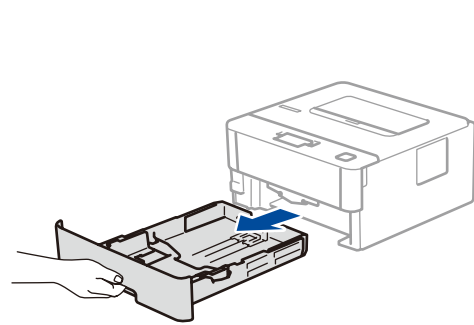
Remove the orange part.



Push firmly.

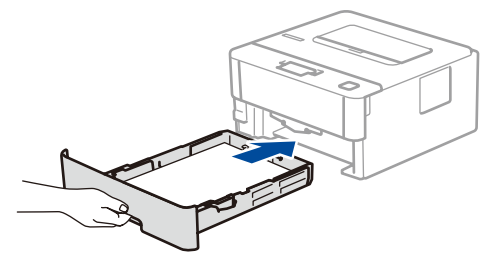
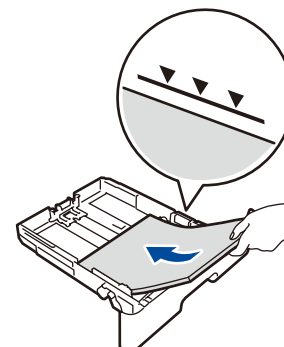


2 Load paper in the paper tray

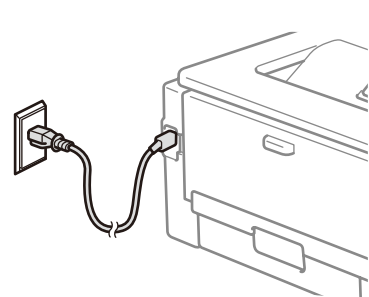


Adjust the paper guides.

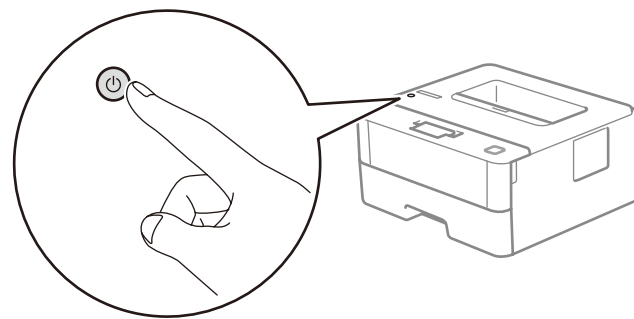
Do not exceed this mark.



3 Connect the power cord and turn the machine on




Back



Front

4 Select a device to connect to your machine

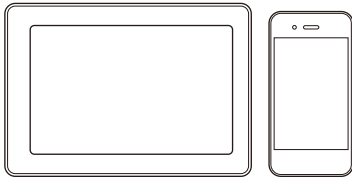
Computer



Go to **5** and follow the instructions.

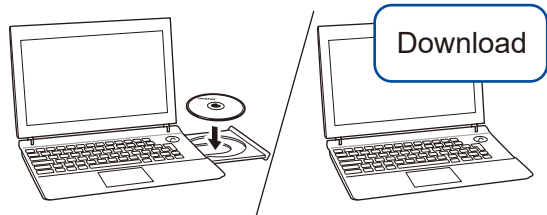
NOTE:
We recommend configuring wireless settings from your computer.

Mobile Device



Go to **6** and follow the instructions.

5 Connect your computer



Put the installation disc into your CD/DVD drive, or download the Full Driver & Software Package at:

www.95105369.com

If you are using a recently released operating system on your computer, visit the above websites for updated driver and software information.

▶ Follow the on-screen instructions and prompts.

For Windows®:
If the Brother screen does not appear automatically, go to **Computer (This PC)**. Double-click the CD/DVD-ROM icon, and then double-click **start.exe**.

For Mac:
For full driver functionality, we recommend choosing the **CUPS driver** when adding a printer.

▶ Finished

Can't Connect? Check the following:



Wireless network



Wired network



USB connection

▶ Restart your wireless access point/router (if possible).

▶ Disconnect the cable.

▶ Restart your machine and computer, and then go to **5**.

▶ If still not successful, go to **6**.

▶ If still not successful, visit www.95105369.com for FAQs & Troubleshooting.

6 Alternative wireless setup (HL-2595DW)

Find your SSID (Network Name) and Network Key (Password) on your wireless access point/router and write them in the table provided below.

SSID (Network Name)	
Network Key (Password)	

SSID: XXXXXXXX
Network key: XXXX

▶ To select each menu option, press ▲ or ▼, and then press **OK** to confirm. Select [Network] > [WLAN] > [Setup Wizard], and then press ▼.

▶ Select the SSID (Network Name) for your access point/router and enter the Network Key (Password).

▶ When the wireless setup is successful, the LCD displays [Connected].

▶ If setup is not successful, restart your Brother machine and your wireless access point/router, and repeat **6**.

For Computer

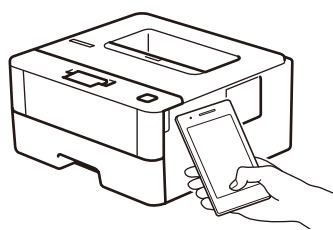
Go to **5** to install software.

For Mobile Device

Go to **7** to install apps.

7 Print using your mobile device

Your mobile device must be connected to the same wireless network as your Brother machine.



AirPrint is available for all supported iOS devices including iPhone, iPad and iPod touch. You do not need to download any software to use AirPrint. For more information, see the *Online User's Guide*.

Search Mopria from the search engine you use, then download and install the Mopria® Print Service app using your Android™ device.

Download and install our free application **Brother iPrint&Scan**.



Read the two-dimensional code (or visit www.95105369.com), click **iPrint&Scan** from the mobile application menu on the right-lower corner to enter the download page.

Optional apps

You can print from your mobile device using various apps. For instructions, see the *Online User's Guide*.