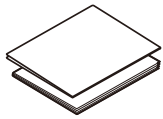
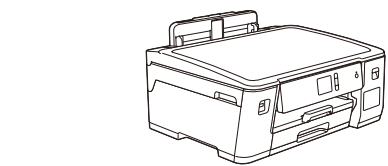


1 Unpack the machine and check the components

Remove the protective tape or film covering the machine.



Inbox Ink Bottles

- [BTD60BK] Black
- [BT5009Y] Yellow
- [BT5009C] Cyan
- [BT5009M] Magenta

Quick Setup Guide
Product Safety Guide

Power Cord

USB Interface Cable

Operation Videos

<http://www.95105369.com>



Installation
& Using
Videos

Maintenance Sheet

**Brother Installation
Disc**

NOTE

- The *Reference Guide* for this model is available on the enclosed installation disc. Visit at the installation disc: \document\userguide\ simplified_chinese\pdf
- Save all packing materials and the box in case you must ship your machine.
- **For a network connection you must purchase a network interface cable. A USB cable is included with your machine.**

USB cable

We recommend using a USB 2.0 cable (Type A/B) that is 2 metres long.

Ethernet (Network) cable

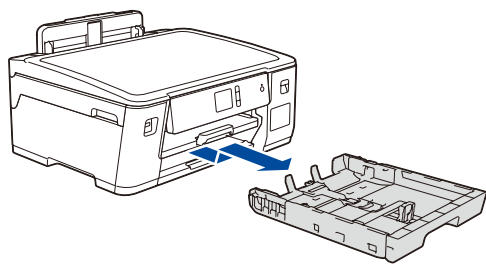
Use a straight-through Category 5 (or greater) twisted-pair cable for 10BASE-T or 100BASE-TX Fast Ethernet Network.

Secure Network Access

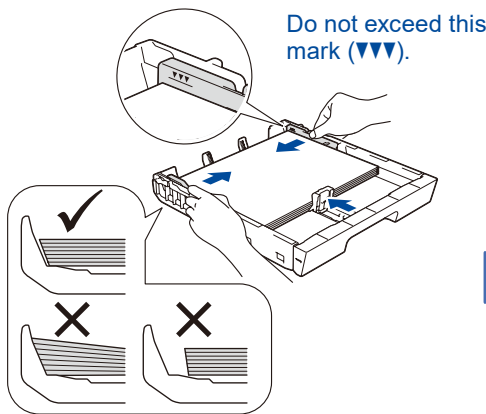
Your machine's default password is on the label on the back of the machine (preceded by "Pwd"). We strongly recommend you change it to protect your machine from unauthorised access.

2 Load plain A4 paper

For more information about paper handling and sizes, see the *Reference Guide*.

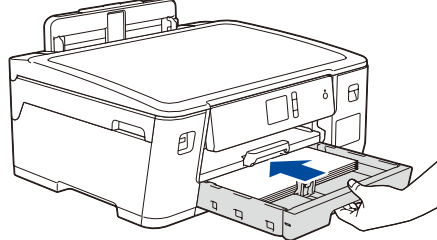


Pull the paper tray completely out of the machine as shown by the arrow.

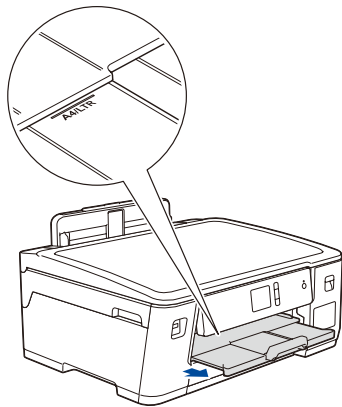


Adjust the paper guides.

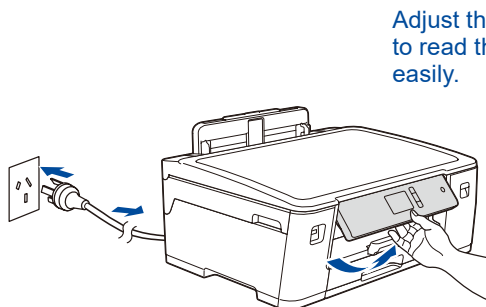
Fan the paper well and load it in the tray.



Slowly push the paper tray completely into the machine.



Pull out the paper support until it locks into place.



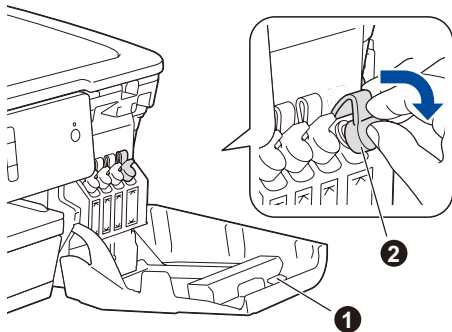
Adjust the control panel angle to read the touchscreen more easily.

Connect the power cord. The machine will power on automatically.

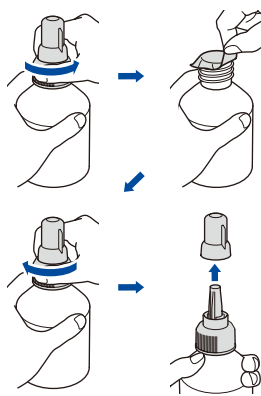
4 Set the date and time

Follow the touchscreen instructions to set the date and time.

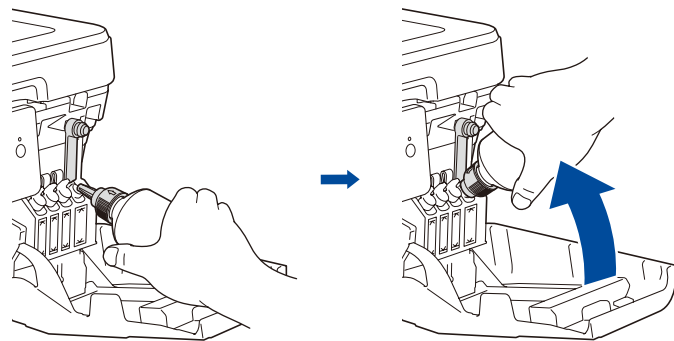
5 Fill the ink tanks with the inbox ink



Open the ink tank cover ① and pull the tab ② downwards to open the cap of the ink tank.



Remove the film and tighten the cap firmly.



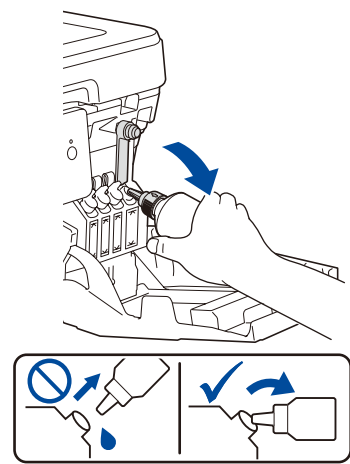
Remove the nozzle cap and insert the bottle nozzle firmly into the ink tank so that the ink does not spill.

The bottle is self-standing and the ink fills automatically until the bottle is empty. To fill the ink tank faster, squeeze the bottle on both sides.

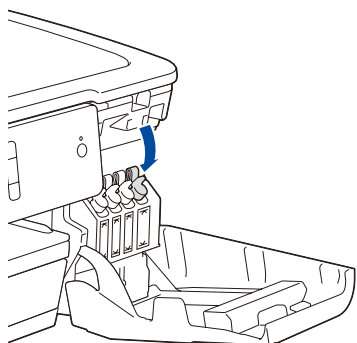
6 Machine settings

When the machine has finished the initial cleaning process, follow the touchscreen instructions to configure the machine settings.

- Check print quality
- Configure the tray or paper size settings
- Set Firmware Update Notice



When finished, remove the bottle, pointing the nozzle upward so the ink does not spill.




Push down on the cap of the ink tank to close it tightly. Repeat step 5 for the three other ink tanks.

Close the ink tank cover. The machine will prepare the ink tube system for printing.

7

Select a device to connect to your machine

Computer



Go to **8** and follow the instructions.

Mobile Device

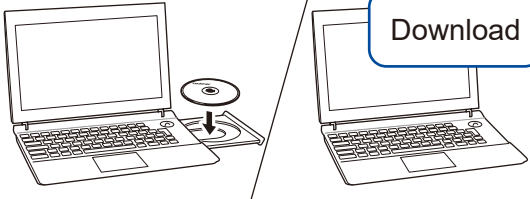


Go to **9** and follow the instructions.

8

Connect your computer

Brother regularly updates firmware to add features and apply bug fixes. To check for the latest firmware, visit support.brother.com/up7.



Download

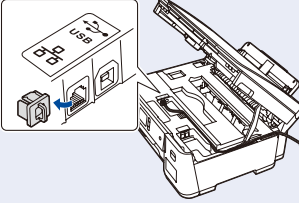
Put the installation disc into your CD/DVD drive, or download the Full Driver & Software Package at:
www.95105369.com
If you are using a recently released operating system on your computer, visit the above websites for updated driver and software information.

Follow the on-screen instructions and prompts.

For Windows®:
If the Brother screen does not appear automatically, go to **Computer (My Computer/This PC)**. Double-click the CD/DVD-ROM icon, and then double-click **start.exe**.


For Mac:
For full driver functionality, we recommend choosing the **CUPS driver** when adding a printer.

For Wired Network Connection and USB Connection:
Locate the correct port (based on the cable you are using) inside the machine as shown.




Finished


Can't Connect? Check the following:



Wireless network



Wired network



USB connection

Restart your wireless access point/router (if possible).

Disconnect the cable.

Restart your machine and computer, and then go to **8**.

If still not successful, go to **9**.

If still not successful, visit www.95105369.com for FAQs and Troubleshooting.

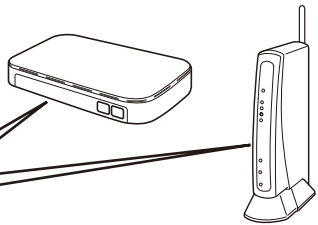
9

Alternative wireless setup

Find your SSID (Network Name) and Network Key (Password) on your wireless access point/router and write them in the table provided below.

SSID (Network Name)	
Network Key (Password)	

SSID: XXXXXXXX
Network key: XXXX



If you cannot find this information, ask your network administrator or wireless access point/router manufacturer.

Go to your machine, and press **WiFi** > [Setup Wizard] > [Yes].

Select the SSID (Network Name) for your access point/router and enter the Network Key (Password).

When the wireless setup is successful, the touchscreen displays [Connected].

If setup is not successful, restart your Brother machine and your wireless access point/router, and repeat **9**.

For Computer

Go to **8** to install software.

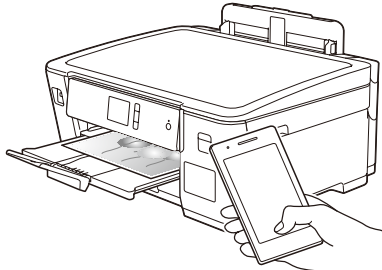
For Mobile Device

Go to **10** to install apps.


10

Print using your mobile device


Your mobile device must be connected to the same wireless network as your Brother machine.



Works with
Apple AirPrint



mopria®



brother

AirPrint is available for all supported iOS devices including iPhone, iPad, and iPod touch. You do not need to download any software to use AirPrint. For more information, see the *Online User's Guide*.

Search Mopria from the search engine you use, then download and install the Mopria® Print Service app using your Android™ device.

Download and install our free application **Brother iPrint&Scan**.

Read the two-dimensional code (or visit <http://www.95105369.com>), click **iPrint&Scan** from the mobile application menu on the right-lower corner to enter the download page.

*We suggest Android users using a mobile browser to scan and download our product.

For FAQs, Troubleshooting, and to download software and manuals, visit www.95105369.com. For product specifications, see the *Online User's Guide*.

© 2018 Brother Industries, Ltd. All rights reserved.

2