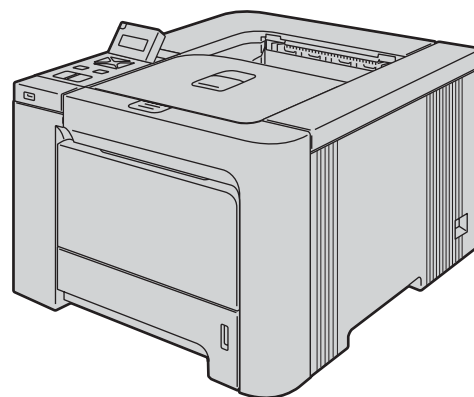


HL-4040CN
HL-4050CDN



Before you can use the printer, you must set up the hardware and install the driver. Please read this 'Quick Setup Guide' for proper set up and installation instructions.

STEP 1

Setting Up the Machine



STEP 2

Installing the Printer Driver





Setup is Complete!






How to use the printer, see the User's Guide in the CD-ROM.

Keep this 'Quick Setup Guide' and the supplied CD-ROM in a convenient place for quick and easy reference at all times.

Symbols used in this guide

 Warning	 Electrical Hazard	 Hot Surface	 Caution
Warnings tell you what to do to prevent possible personal injury.	Electrical Hazard icons alert you to a possible electrical shock.	Hot Surface icons warn you not to touch machine parts that are hot.	Cautions specify procedures you must follow or avoid to prevent possible damage to the printer or other objects.

 Improper Setup	 Note	 User's Guide Network User's Guide
Improper Setup icons alert you to devices and operations that are not compatible with the printer.	Notes tell you how you should respond to a situation that may arise or give tips about how the current operation works with other features.	Indicates reference to the User's Guide or Network User's Guide which is on the CD-ROM we have supplied.

Safety Precautions	2
To Use the Printer Safely	2
Regulations	4

Getting Started

What is in the box?	5
Control panel	6
Supplied CD-ROM	7

STEP 1—Setting Up the Machine

Put the CD-ROM into the CD-ROM drive	8
Removing the packing materials from the printer	9
Installing the toner cartridges	10
Loading paper in the paper tray	10
Printing a test page	11
Setting your language on the control panel	12

STEP 2—Installing the Printer Driver

Windows®

For USB interface cable users	14
For parallel interface cable users	16
For network interface cable users	17
For Peer-to-Peer network printer users	17
For shared network printer users	19

Macintosh®

For USB interface cable users	21
For network interface cable users	23

For Network Users

BRAAdmin Light utility (For Windows® users)	25
BRAAdmin Light utility (For Mac OS® X users)	26
Web Based Management (web browser)	27
Network default settings	27
Print the Printer Settings Page	27

Consumables and Options

Options	28
Consumables	28

Other Information

Shipment of the printer	29
Repacking Instructions	29

Troubleshooting



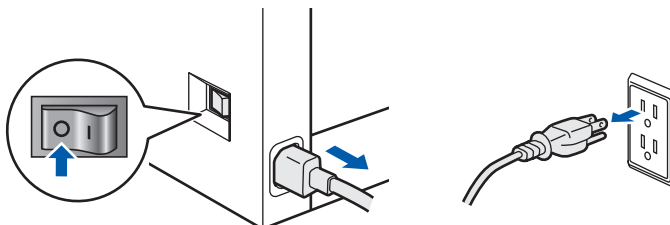
Chapter 7 of the User's Guide on the CD-ROM

To Use the Printer Safely

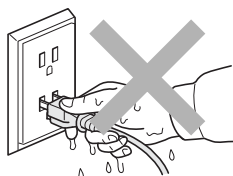
Warning



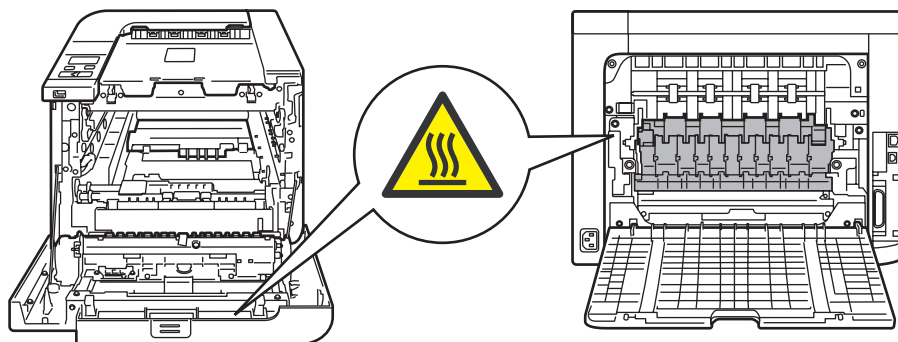
There are high voltage electrodes inside the printer. Before you clean the inside of the printer, make sure that you have turned off the power switch and unplugged the printer from the AC power outlet.



DO NOT handle the plug with wet hands. Doing this might cause an electrical shock.



The fuser unit becomes extremely hot during operation. Wait until it has cooled down sufficiently before replacing consumable items. DO NOT remove or damage the caution labels located on or around the fuser.



DO NOT use flammable substances or any type of spray to clean the inside or outside of the machine. Doing this may cause a fire or electrical shock. Refer to the User's Guide for how to clean the machine.





DO NOT use a vacuum cleaner to clean up scattered toner. Doing this might cause the toner dust to ignite inside the vacuum cleaner, potentially starting a fire. Please carefully clean the toner dust with a dry, lint-free cloth and dispose of it according to local regulations.



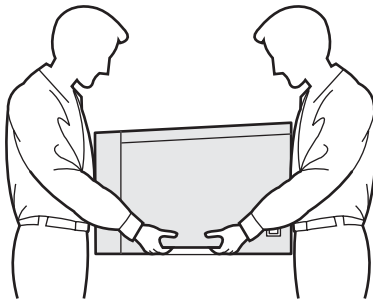
If the printer becomes hot, blows smoke, or generates obscure odor, immediately turn off the power switch and unplug the printer from the AC power outlet. Call your Brother dealer or Brother Customer Service.



If metal objects, water or other liquids get inside the printer, immediately turn off the power switch and unplug the printer from the AC power outlet. Call your Brother dealer or Brother Customer Service.



This printer is heavy and weighs approximately 64.2 lb. (29.1 kg). To prevent injuries use at least two people to lift the printer. Be careful not to pinch your fingers when you put the printer back down.



Regulations

Radio interference (220-240 volt model only)

This printer follows EN55022 (CISPR Publication 22)/Class B.

Before you use this product, make sure that you use one of the following interface cables.

- 1 A shielded parallel interface cable with twisted-pair conductors and that it is marked "IEEE 1284 compliant". (For HL-4050CDN users)
- 2 A USB cable.

The cable must not be more than 2 meters long.

IEC 60825-1 specification

This printer is a Class 1 laser product as defined in IEC 60825-1+A2: 2001 specifications. The label shown below is attached in countries where it is needed.



This printer has a Class 3B laser diode which produces invisible laser radiation in the laser unit. You should not open the laser unit under any circumstances.



Caution

Use of controls or adjustments or performance of procedures other than those specified herein may result in hazardous radiation exposure.

Internal laser radiation

Maximum radiation power:	25 mW
Wave length:	780 - 800 nm
Laser class:	Class 3B

IMPORTANT - For Your Safety

To ensure safe operation, the supplied three-pin plug must be inserted only into a standard three-pin power outlet that is properly grounded through the normal household wiring.

Extension cords used with this printer must be three-pin plug type and correctly wired to provide proper grounding. Incorrectly wired extension cords may cause personal injury and equipment damage.

The fact that the equipment operates satisfactorily does not imply that the power is grounded and that the installation is completely safe. For your safety, if in any doubt about the effective grounding of the power, call a qualified electrician.

This product should be connected to an AC power source within the range indicated on the rating label. DO NOT connect it to a DC power source. If you are not sure, contact a qualified electrician.

Changes or modifications not expressly approved by Brother Industries, Ltd. could void the user's authority to operate the equipment.

Disconnect device

You must install this printer near a power outlet that is easily accessible. In case of an emergency, you must disconnect the power cord from the power outlet to shut off the power completely.

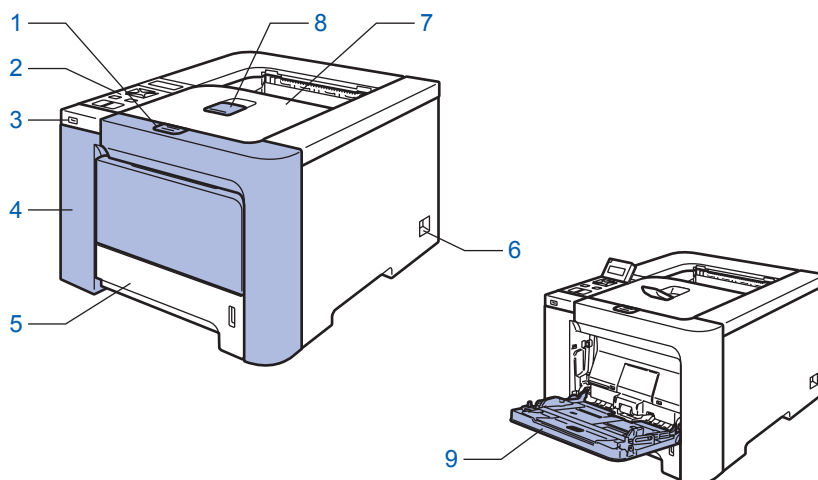
Caution for LAN connection

Connect this product to a LAN connection that is not subjected to over voltages.

What is in the box?

Carton components may vary from one country to another.

Save all packing materials and the printer carton in case for any reason you must ship your printer.



1 Front cover release button

2 Control panel ¹

3 USB direct interface

4 Front cover

5 Paper tray



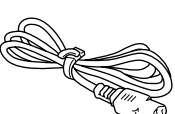
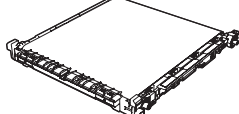
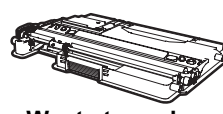
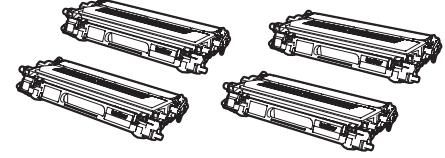

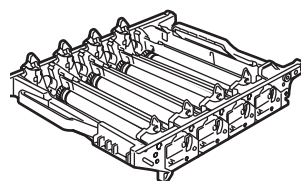
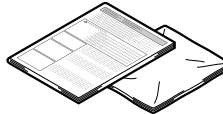
6 Power switch

7 Face-down output tray

8 Face-down output tray support flap (Support flap)

9 Multi-purpose tray (MP tray)

¹ You can adjust the angle of the LCD display by tilting it up or down.

 CD-ROM (including User's Guide)	 Quick Setup Guide	 AC power cord	 Belt unit (pre-installed)	 Waste toner box (pre-installed)
 Toner cartridges (Black, Cyan, Magenta and Yellow)	 USB Cable	 Drum unit (pre-installed)	 Insertion sheet and Plastic bag for repacking	

The Parallel interface cable and Network interface cable are not standard accessories. Please purchase them, if you intend to use.

■ USB cable

Do not use a USB interface cable that is longer than 6 feet (2.0 meters).

Do not connect the USB cable to a non-powered hub or a Macintosh[®] keyboard.

Make sure that you connect it to the USB connector of your computer.

■ Parallel cable (For HL-4050CDN users)

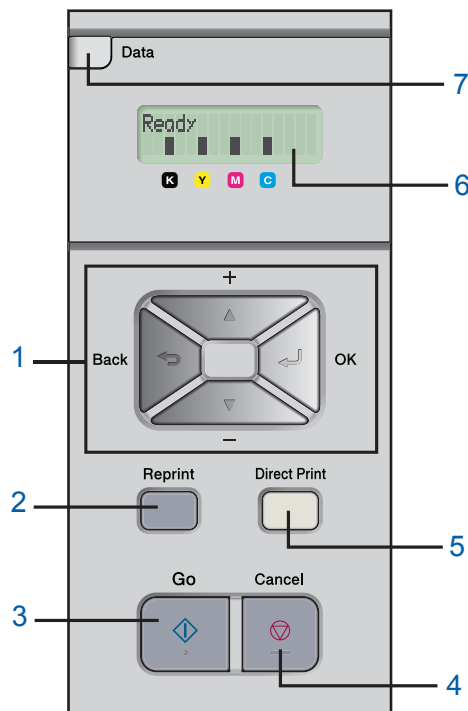
Do not use a parallel interface cable that is longer than 6 feet (2.0 meters).

Use a shielded interface cable that is IEEE 1284-compliant.

■ Network cable

Use a straight-through Category5 (or greater) twisted-pair cable for 10BASE-T or 100BASE-TX Fast Ethernet Network.

Control panel



1 Menu buttons

- **+**
Scroll backward through menus and the available options.
- **-**
Scroll forward through menus and the available options.
- **OK**
Choose the control panel menu.
Select the chosen menus and settings.
- **Back**
Go back one level in the menu structure.

2 Reprint button

Choose the reprint menu.

3 Go button

Clear error messages.
Pause and continue printing.

4 Cancel button

Stop and cancel the print operation in progress.
Exit from a menu (control panel menu, reprint menu or Direct Print menu)

5 Direct Print LED: Blue

- **On**
USB flash memory is inserted into the USB direct interface.
- **Off**
USB flash memory is not inserted into the USB direct interface.

Direct Print button

Switch to Direct Print mode when USB flash memory is inserted into the USB direct interface.

6 LCD back light

- **Off**
The printer is off or in sleep status.
- **Green (General)**
Ready to print / Printing / Warming up
- **Red (Error)**
There is a problem with the printer.
- **Orange (Setting)**
Choose a menu (control panel menu, reprint menu or Direct Print menu) or Pause

LCD messages

The message on the LCD shows the current printer status during normal operation.

The ■ marks indicate the status of the toner in the toner cartridges. When the ■ mark blinks (□), the indicated toner is nearly empty. When toner becomes empty, the ■ indicator disappears completely.

7 Data LED: Yellow

- **On**
Data is in the printer memory.
- **Blinking**
Receiving / processing data
- **Off**
No remaining data in the memory.

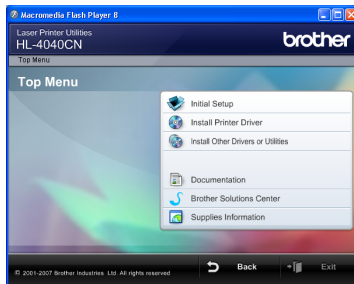


For the control panel details, see Chapter 4 of the User's Guide on the CD-ROM.

Supplied CD-ROM

You can find a variety of information on the CD-ROM.

Windows®



Initial Setup

Instructional movie for printer setup.



Install Printer Driver

Install the printer driver.



Install Other Drivers or Utilities

Install optional drivers, utilities and Network management tools.



Documentation

View the Printer User's Guide and Network User's Guide in HTML format.

You can also view the manuals in PDF format by accessing the Brother Solutions Center.

The User's Guide and Network User's Guide in HTML format will be installed automatically when you install the driver. Click the **Start** button, **All Programs**¹, your printer (Brother HL-4050CDN), and then User's Guide. If you do not want to install the User's Guide, choose **Custom setup** from **Install Printer Driver**, and uncheck **User's Guides in HTML format** when you install the driver.

¹ **Programs** for Windows® 2000 users



Brother Solutions Center

The Brother Solutions Center (<http://solutions.brother.com>) is a one-stop resource for all your printer support needs. Download the latest drivers and utilities for your printers, read FAQs and troubleshooting tips, or learn about printer solutions.



Supplies Information

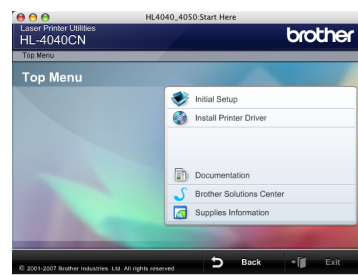
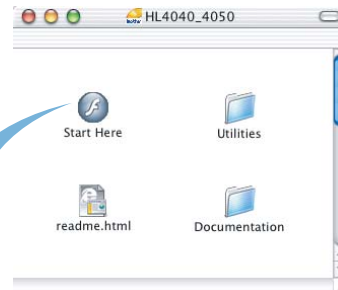
Visit our web site for original/genuine Brother supplies at <http://www.brother-cn.net/supply.html>



Note

For visually impaired users, we have prepared an HTML file on the supplied CD-ROM: readme.html. This file can be read by Screen Reader 'text-to-speech' software.

Macintosh®



Initial Setup

Instructional movie for printer setup.



Install Printer Driver

Install the printer driver.



Documentation

View the Printer User's Guide and Network User's Guide in HTML format.

You can also view the User's Guide in PDF format by accessing the Brother Solutions Center.



Brother Solutions Center

The Brother Solutions Center (<http://solutions.brother.com>) is a one-stop resource for all your printer support needs. Download the latest drivers and utilities for your printers, read FAQs and troubleshooting tips, or learn about printer solutions.



Supplies Information

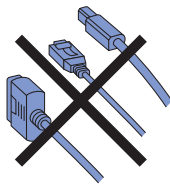
Visit our web site for original/genuine Brother supplies at <http://www.brother-cn.net/supply.html>

1 Put the CD-ROM into the CD-ROM drive

For Windows® users

⊘ Improper Setup

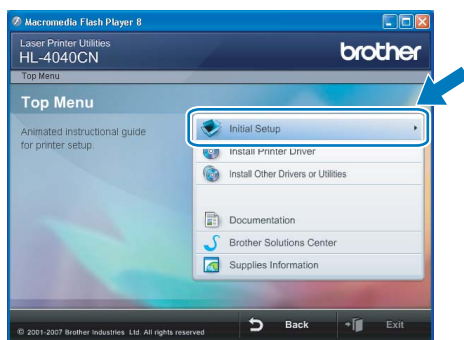
DO NOT connect the interface cable.
Connecting the interface cable is done when installing the driver.



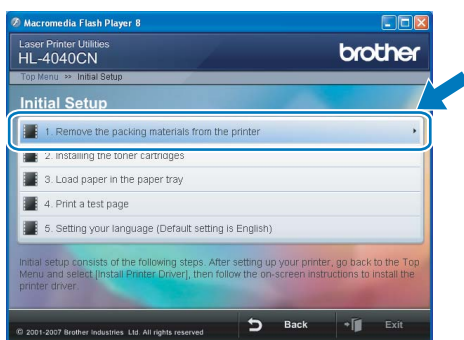
- 1 Turn on your computer. (You must be logged on with Administrator rights.) Put the supplied CD-ROM into your CD-ROM drive. The opening screen will appear automatically. Choose your printer model and the language.



- 2 Click **Initial Setup** on the menu screen.



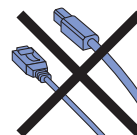
- 3 You can view the initial setup instructions and follow along with the steps on the next page.



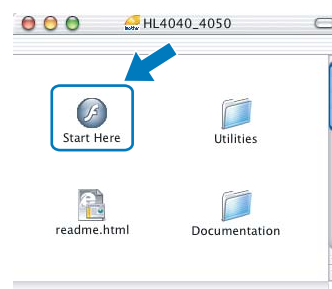
For Macintosh® users

⊘ Improper Setup

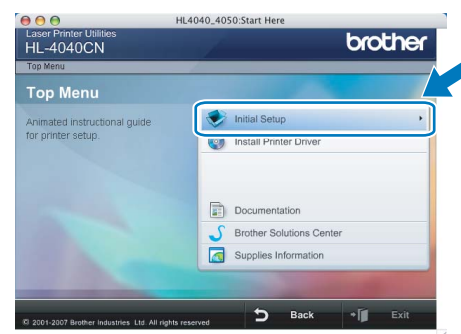
DO NOT connect the interface cable.
Connecting the interface cable is done when installing the driver.



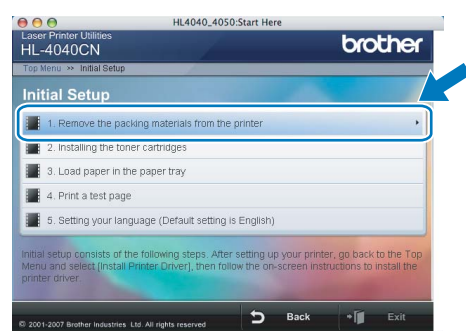
- 1 Turn on your Macintosh®. Put the supplied CD-ROM into your CD-ROM drive, and then double-click the **HL4040_4050** icon on your desktop. Double-click the **Start Here** icon. Follow the on-screen instructions.



- 2 Click **Initial Setup** on the menu screen.



- 3 You can view the initial setup instructions and follow along with the steps on the next page.



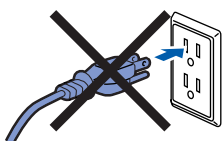
2 Removing the packing materials from the printer

Important

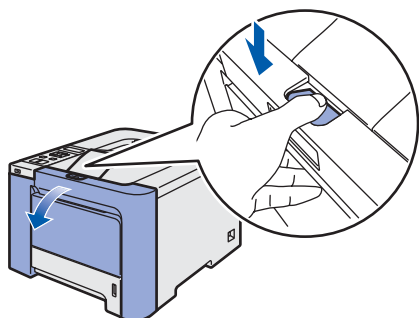
Save all packing material and the carton in case you have to ship your machine.

⊘ Improper Setup

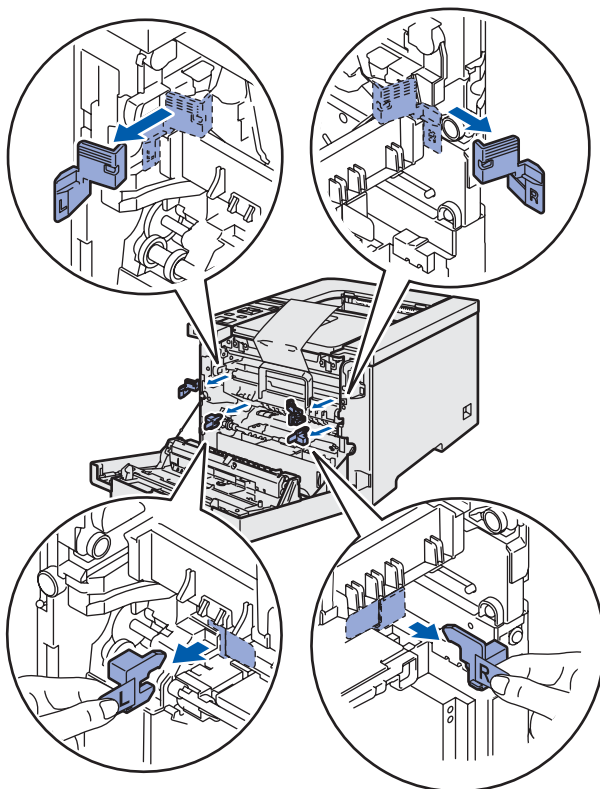
DO NOT plug in the AC power cord yet.



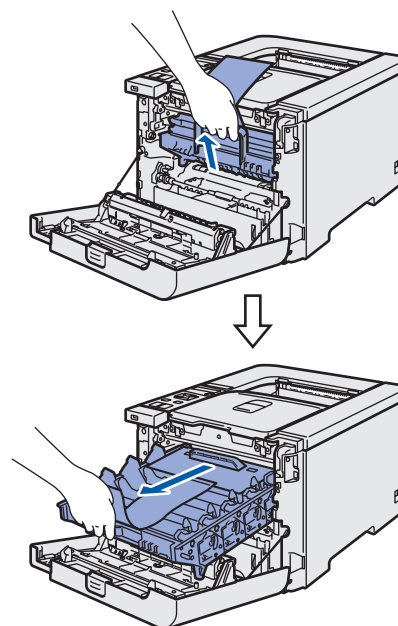
- 1** Press the front cover release button and open the front cover.



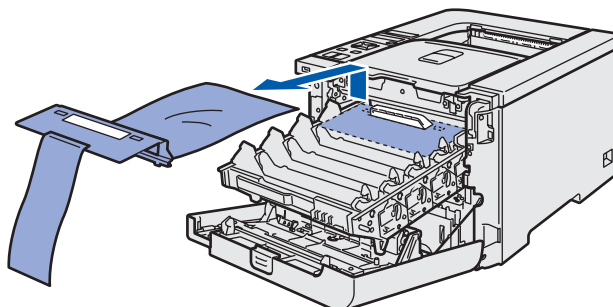
- 2** Remove the 4 pieces of orange packing material as shown in the illustration below.



- 3** Hold the green handle of the drum unit. Lift the drum unit up and then pull it out until it stops.

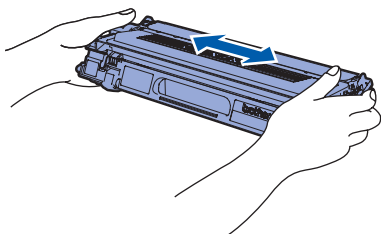


- 4** Remove the orange packing material as shown in the illustration below.

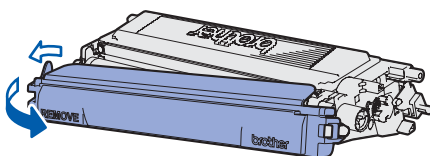


3 Installing the toner cartridges

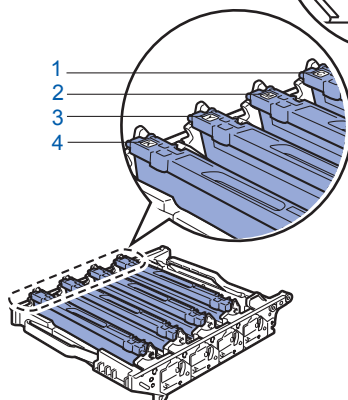
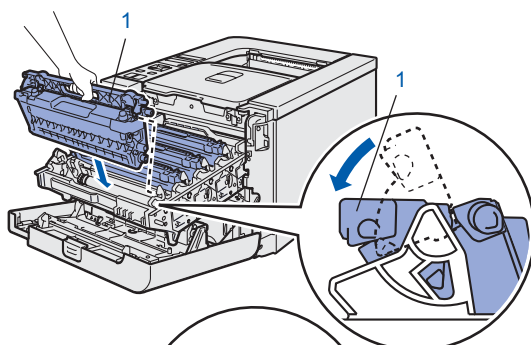
- 1 Unpack the toner cartridges and rock each toner cartridge 5 to 6 times.



- 2 Remove the protective cover.



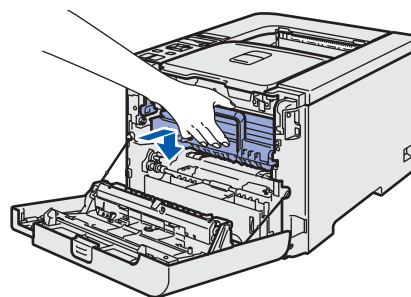
- 3 Hold the handle of the toner cartridge and slide it into the drum unit. Make sure that you match the toner cartridge color to the same color label on the drum unit, and make sure that you fold down the toner cartridge handle (1) once the toner cartridge is in place.



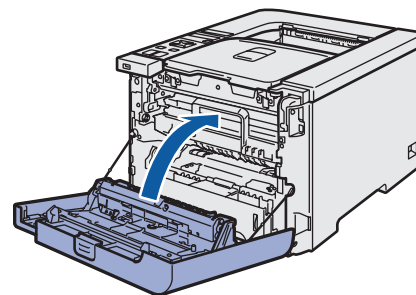
- 1 C — Cyan
- 2 M — Magenta
- 3 Y — Yellow
- 4 K — Black

- 4 Repeat steps 1 through 3 for the remaining toner cartridges.

- 5 Put the drum unit back into the printer.

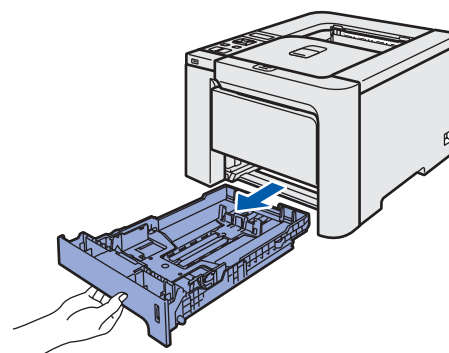


- 6 Close the front cover of the printer.

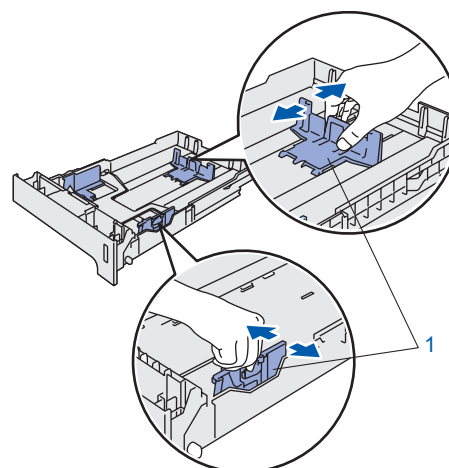


4 Loading paper in the paper tray

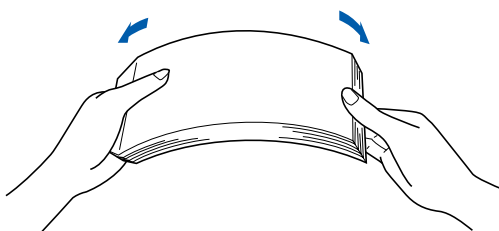
- 1 Pull the paper tray completely out of the printer.



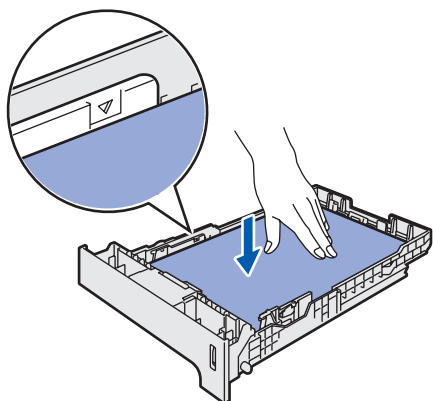
- 2 While pressing the green paper-guide release lever (1), slide the paper guides to fit the paper size. Make sure that the guides are firmly in the slots.



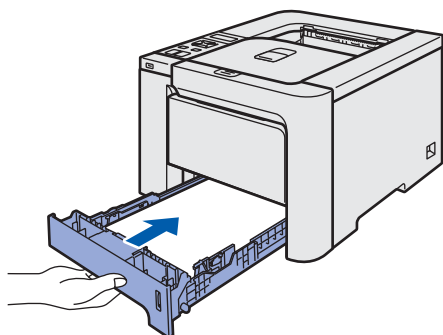
- 3** Fan the stack of paper well to avoid paper jams and misfeeds.



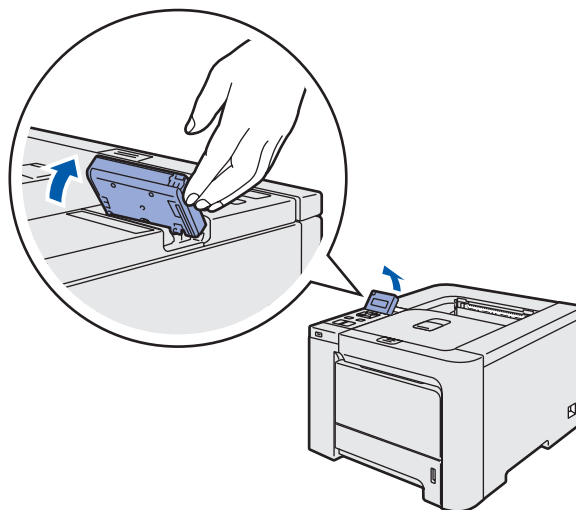
- 4** Put paper in the paper tray. Make sure that the paper is flat in the tray and below the maximum paper mark.



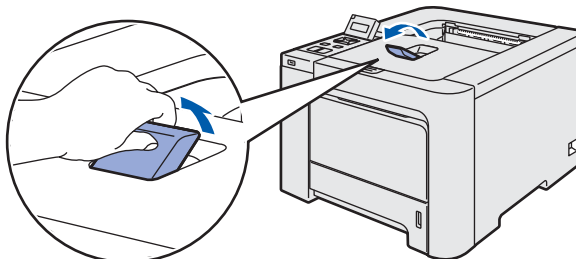
- 5** Put the paper tray firmly back into the printer. Make sure that it is completely inserted into the printer.



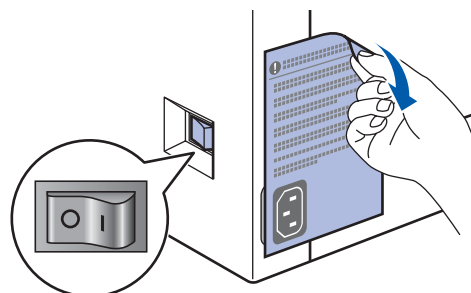
- 1** Lift the LCD display and adjust it for the best viewing angle.



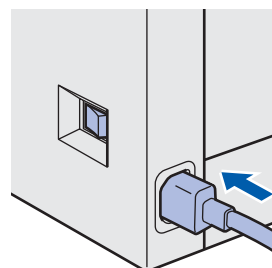
- 2** Unfold the support flap.



- 3** Make sure that the printer power switch is off. Remove the label covering the AC power inlet.

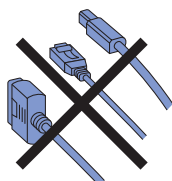


- 4** Connect the AC power cord to the printer.

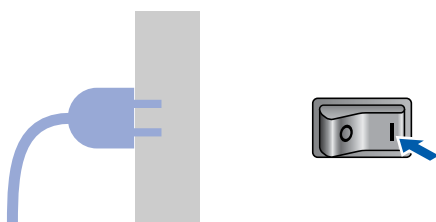


5 Printing a test page

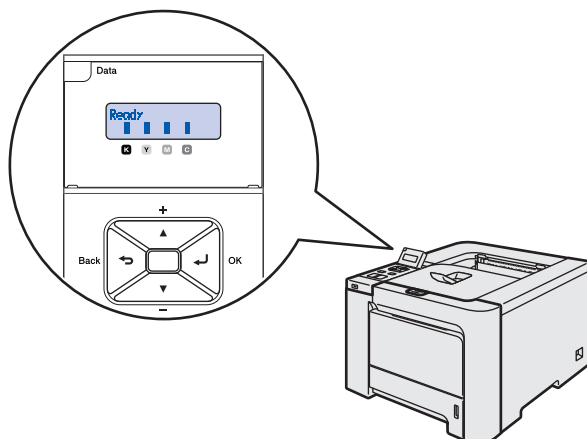
- Improper Setup**
DO NOT connect the interface cable yet.



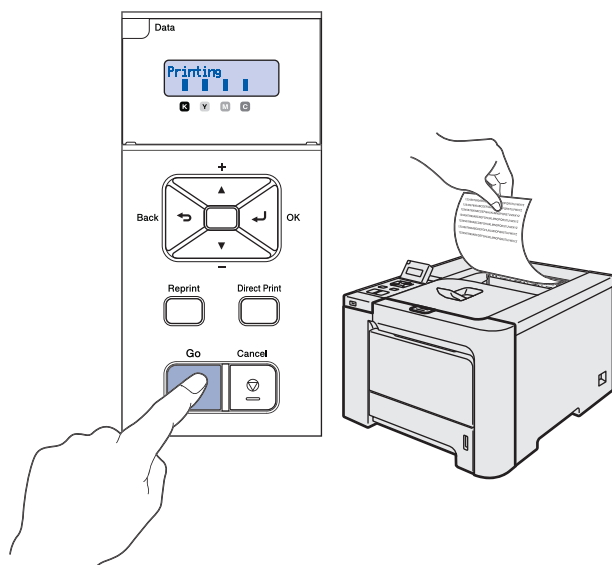
- 5** Plug the AC power cord into an AC power outlet. Turn on the printer power switch.



- 6** After the printer has finished warming up, the LCD shows *Ready*.



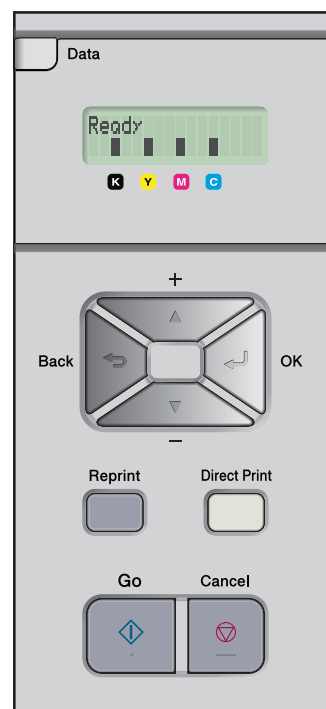
- 7** Press **Go**. The printer prints a test page. Check that the test page has printed correctly.



Note

- If you press **Reprint**, the printer prints a duplex test page. (For HL-4050CDN)
- This function will not be available after the first print job you send from your computer.

6 Setting your language on the control panel



- 1** Press the **+** or **-** button until the LCD shows *General Setup*. Press **OK**.

Select ▲▼ or OK
General Setup

- 2** Press **OK** again.

General Setup
Local Language

- 3** Press the **+** or **-** button to choose your language. Press **OK** to accept.

Local Language
English



Note

Chinese is not supported on the LCD.

STEP 2

Installing the Printer Driver

Follow the instructions on this page for your operating system and interface.

For the latest drivers, documentation, and to find the best solution for your problem, access the Brother Solution Center directly from the CD-ROM / Driver or visit <http://solutions.brother.com>.

Windows®

For USB interface cable users..... 14



For parallel interface cable users..... 16



For network interface cable users 17



- For Peer-to-Peer network printer users..... 17
- For shared network printer users 19

Macintosh®

For USB interface cable users..... 21



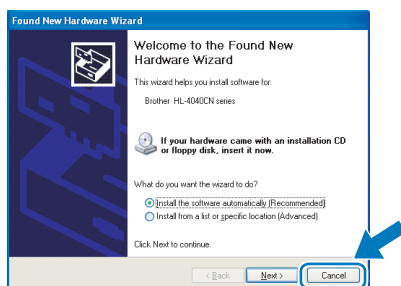
For network interface cable users 23



For USB interface cable users

**Note**

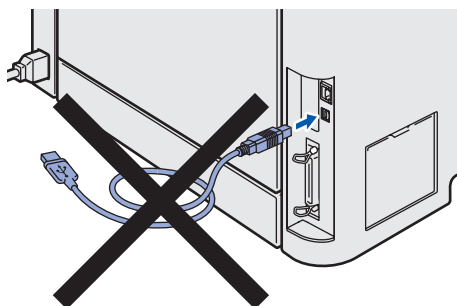
If the **Found New Hardware Wizard** appears on your computer, click **Cancel**.



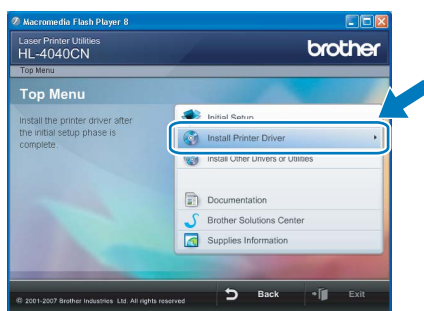
Installing the driver and connecting the printer to your computer

1

Make sure the USB interface cable is **NOT** connected to the printer, and then begin installing the driver. If you have already connected the cable, remove it.

**2**

Click **Install Printer Driver** on the menu screen.

**3**

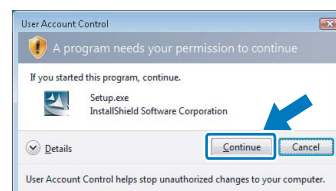
Click **USB cable users**.
For HL-4040CN users:



For HL-4050CDN users:

**Note**

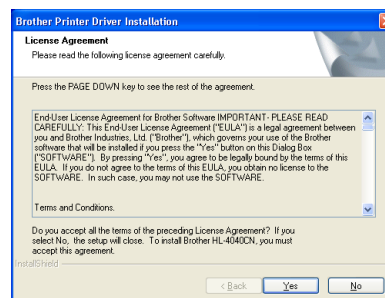
- For Windows Vista™, when the User Account Control screen appears, click **Continue**.



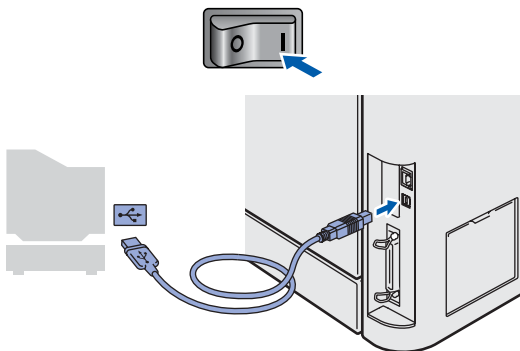
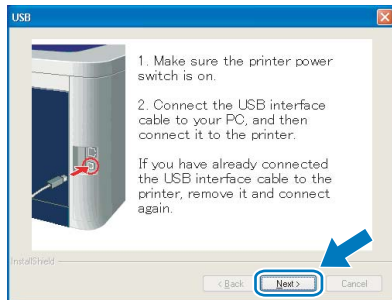
- If you want to install the PS driver (Brother's BR-Script Driver), choose **Custom setup** and then follow the on-screen instructions. When the **Select Components** screen appears, check **PS(PostScript Emulation) Driver**, and then continue following the on-screen instructions.

4

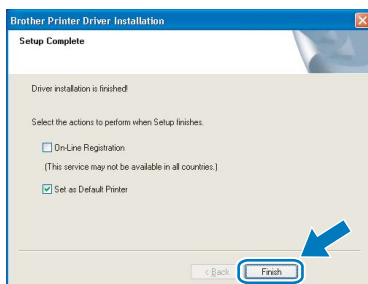
When the License Agreement window appears, click **Yes** if you agree to the License Agreement.



- 5** When this screen appears, make sure the printer power switch is on. Connect the USB interface cable to your computer, and then connect it to the printer. Click **Next**.



- 6** Click **Finish**.



Note

If you do not want to set your printer as Default printer, uncheck Set as Default Printer.



Setup is now complete.

For parallel interface cable users



Note

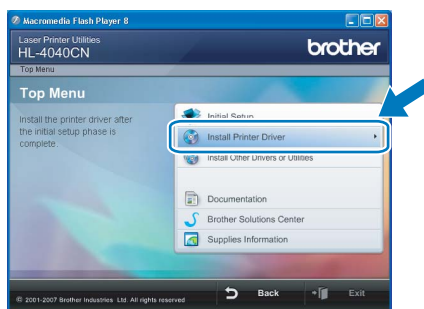
If the **Found New Hardware Wizard** appears on your computer, click **Cancel**.



Installing the driver and connecting the printer to your computer

1

Click **Install Printer Driver** on the menu screen.



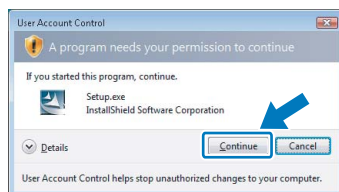
2

Click **Parallel cable users**.



Note

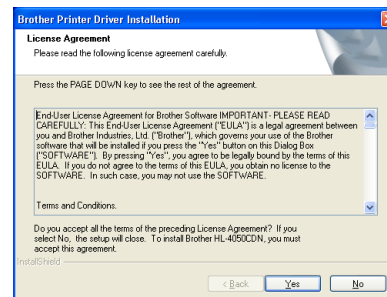
- For Windows Vista™, when the User Account Control screen appears, click **Continue**.



- If you want to install the PS driver (Brother's BR-Script Driver), choose **Custom setup** and then follow the on-screen instructions. When the **Select Components** screen appears, check **PS(PostScript Emulation) Driver**, and then continue following the on-screen instructions.

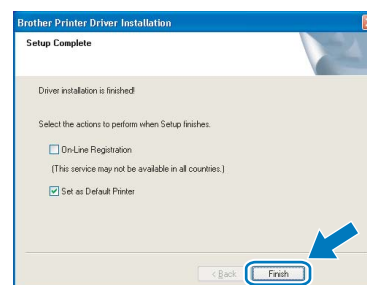
3

When the License Agreement window appears, click **Yes** if you agree to the License Agreement.



4

Click **Finish**.



Note

If you do not want to set your printer as Default printer, uncheck **Set as Default Printer**.

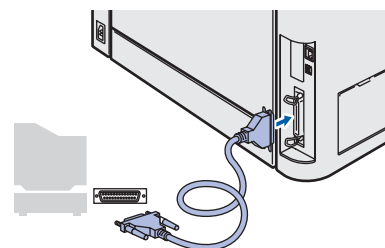
5

Turn off the printer power switch.



6

Connect the parallel interface cable to your computer, and then connect it to your printer.



7

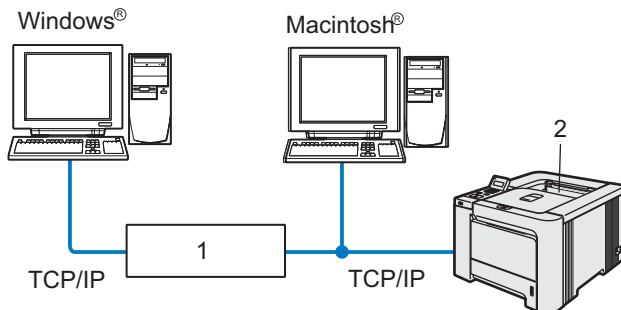
Turn on the printer power switch.



Setup is now complete.

For network interface cable users

For Peer-to-Peer network printer users



- 1 Router
- 2 Network printer

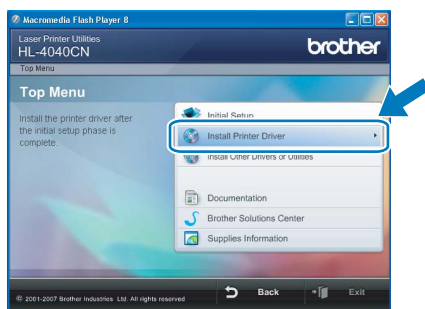


Note

- If you are going to connect the printer to your network, we recommend that you contact your system administrator prior to installation or see the Network User's Guide on the CD-ROM.
- If you are using Personal Firewall software (e.g. Windows Firewall), disable it. Once you are sure that you can print, restart your Personal Firewall software.

Connecting the printer to your network and installing the driver

- Click **Install Printer Driver** on the menu screen.



2

- Click **Network cable users**.

For HL-4040CN users:

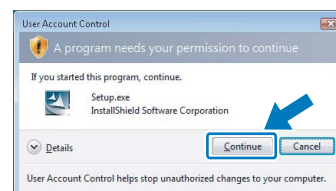


For HL-4050CDN users:



Note

- For Windows Vista™, when the User Account Control screen appears, click **Continue**.



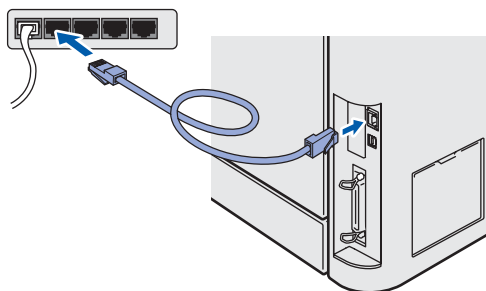
- If you want to install the PS driver (Brother's BR-Script Driver), choose **Custom setup** and then follow the on-screen instructions. When the **Select Components** screen appears, check **PS(PostScript Emulation) Driver**, and then continue following the on-screen instructions.

3

- Turn off the printer power switch.



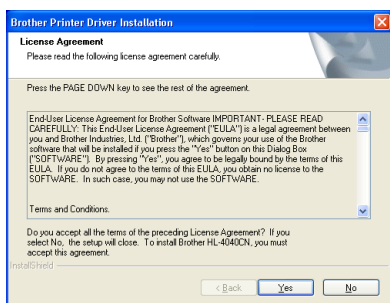
- 4** Connect the network interface cable to the printer, and then connect it to a free port on your hub.



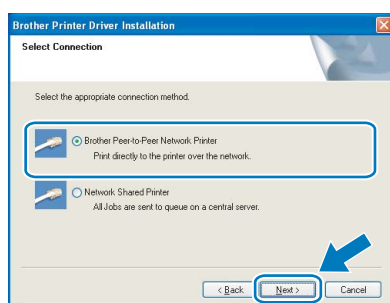
- 5** Turn on the printer power switch.



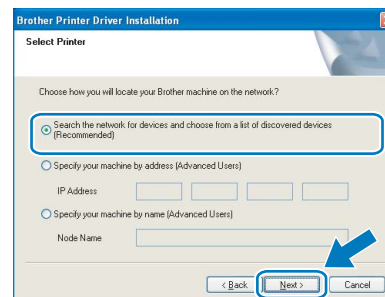
- 6** When the License Agreement window appears, click **Yes** if you agree to the License Agreement.



- 7** Choose **Brother Peer-to-Peer Network Printer**, and then click **Next**.

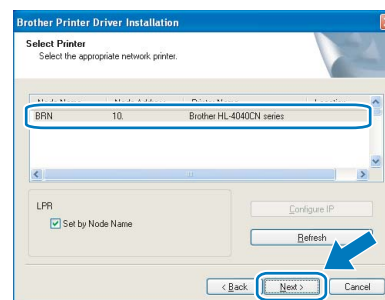


- 8** Choose **Search the network for devices and choose from a list of discovered devices (Recommended)**. Or enter your printer's IP address or its node name. Click **Next**.

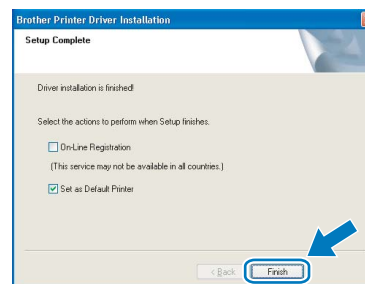
**Note**

Contact your administrator if you do not know the printer's IP address or node name.

- 9** Choose your printer, and then click **Next**.



- 10** Click **Finish**.

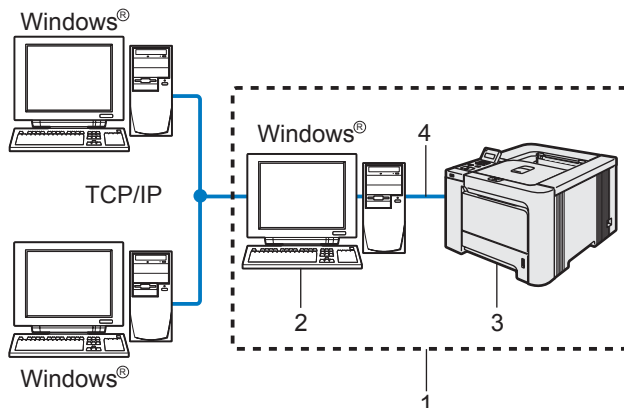
**Note**

If you do not want to set your printer as Default printer, uncheck Set as Default Printer.



Setup is now complete.

For shared network printer users



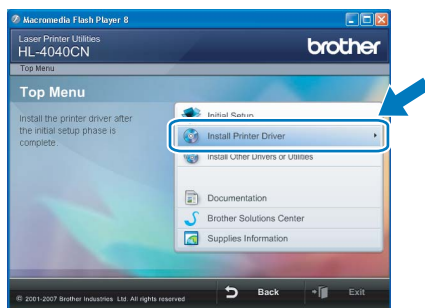
- 1 Network Shared
- 2 Also known as "Server" or "Printer server"
- 3 Printer
- 4 TCP/IP, USB or Parallel

Note

If you are going to connect to a shared printer on your network, we recommend that you ask your system administrator about the queue or share name for the printer prior to installation.

Installing the driver and choosing the correct printer queue or share name

- 1 Click **Install Printer Driver** on the menu screen.



- 2 Click **Network cable users**.
For HL-4040CN users:

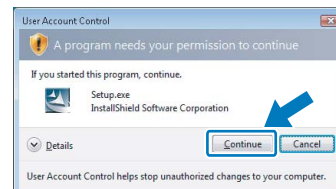


For HL-4050CDN users:



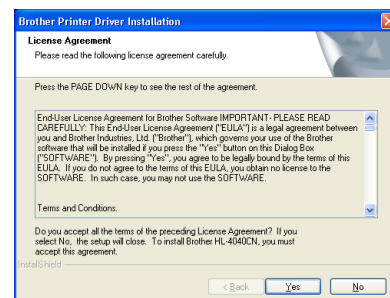
Note

- For Windows Vista™, when the User Account Control screen appears, click **Continue**.

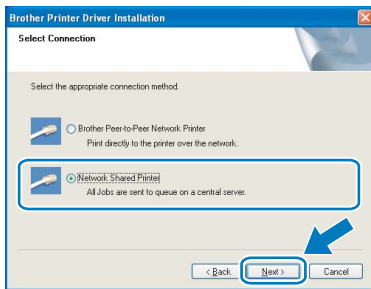


- If you want to install the PS driver (Brother's BR-Script Driver), choose **Custom setup** and then follow the on-screen instructions. When the **Select Components** screen appears, check **PS(PostScript Emulation) Driver**, and then continue following the on-screen instructions.

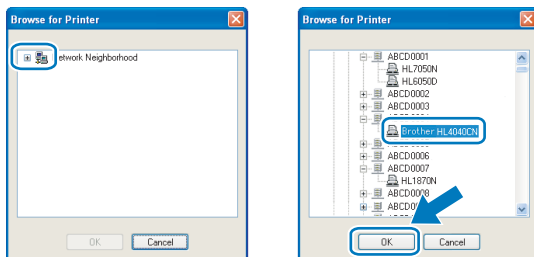
- 3 When the License Agreement window appears, click **Yes** if you agree to the License Agreement.



- 4 Choose **Network Shared Printer**, and then click **Next**.

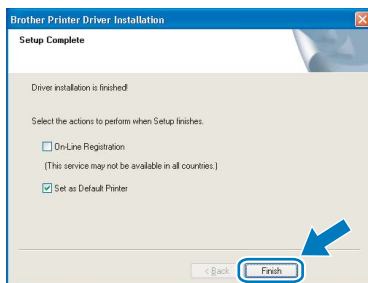


- 5 Choose your printer's queue, and then click **OK**.

**Note**

Contact your administrator if you do not know the location or the name of the printer in the network.

- 6 Click **Finish**.

**Note**

If you do not want to set your printer as Default printer, uncheck Set as Default Printer.

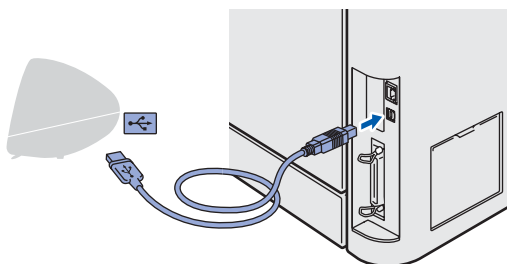


Setup is now complete.

For USB interface cable users

Connecting the printer to your Macintosh® and installing the driver

- 1 Connect the USB interface cable to your Macintosh®, and then connect it to the printer.



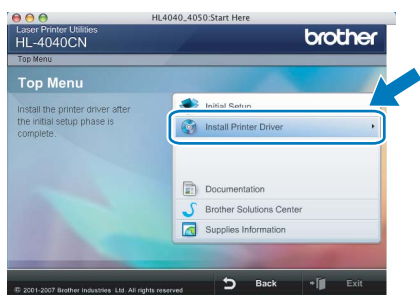
Improper Setup

DO NOT connect the printer to a USB port on a keyboard or a non-powered USB hub.

- 2 Make sure the printer power switch is on.



- 3 Click **Install Printer Driver** on the menu screen.



- 4 Click **USB cable users** and follow the on-screen instructions. Then, restart your Macintosh®.



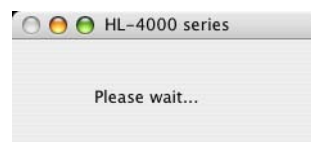
For Mac OS® X 10.2.4 to 10.2.8 users:
Go to step 7.

For Mac OS® X 10.3 or greater users:
Go to step 5.

Note

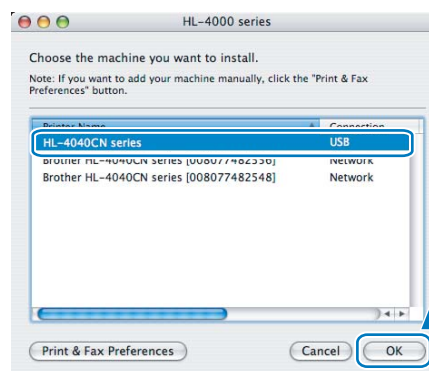
Please see the User's Guide on the CD-ROM to install the PS driver (Brother's BR-Script Driver).

- 5 The Brother software will search for the Brother printer. During this time the following screen will appear.

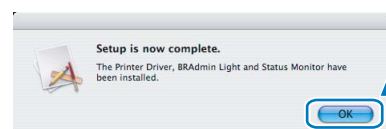


Note

If more than one printer is available, the following list appears. Choose the printer you wish to connect, and then click **OK**.

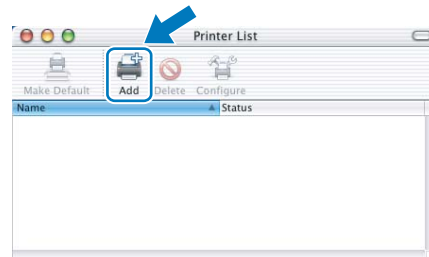


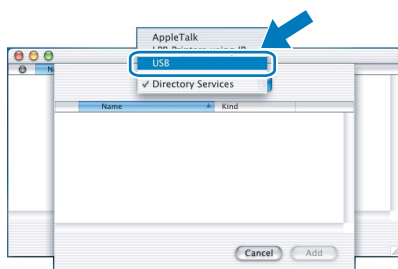
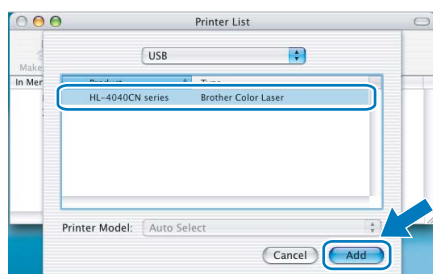
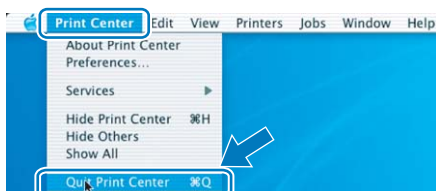
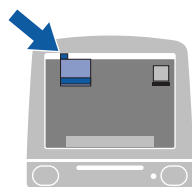
- 6 When this screen appears, click **OK**.



- For Mac OS® X 10.3 or greater users:
Setup is now complete.

- 7 When this screen appears, click **Add**.



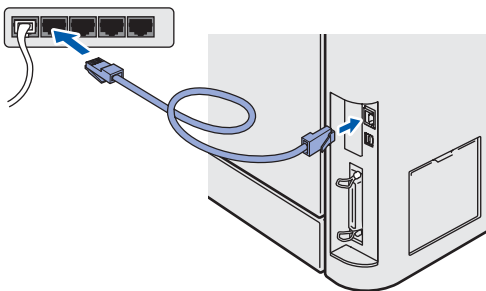
8 Choose **USB**.**9** Choose your printer, and then click **Add**.**10** Click **Print Center**, then **Quit Print Center**.

For Mac OS® X 10.2.4 to 10.2.8 users:
Setup is now complete.

For network interface cable users

Connecting the printer to your Macintosh® and installing the driver

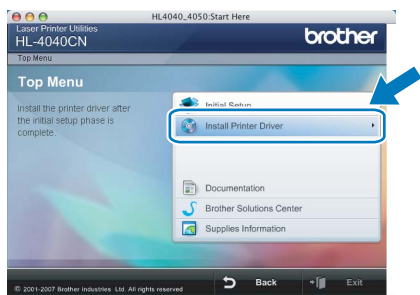
- 1 Connect the network interface cable to the printer, and then connect it to a free port on your hub.



- 2 Turn on the printer power switch.



- 3 Click **Install Printer Driver** on the menu screen.



- 4 Click **Network cable users** and follow the on-screen instructions. Then, restart your Macintosh®.



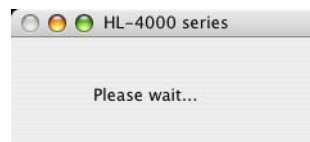
For Mac OS® X 10.2.4 to 10.2.8 users:
Go to step 7.

For Mac OS® X 10.3 or greater users:
Go to step 5.

Note

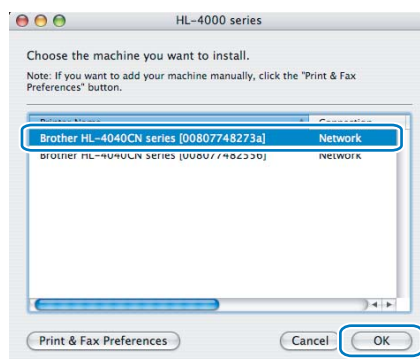
Please see the *Network User's Guide* on the CD-ROM to install the PS driver (Brother's BR-Script Driver).

- 5 The Brother software will search for the Brother printer. During this time the following screen will appear.



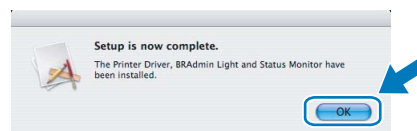
Note

If more than one printer is available, the following list appears. Choose the printer you wish to connect, and then click **OK**.



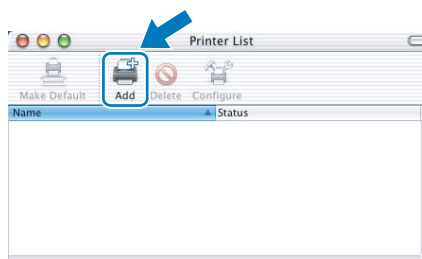
- If there is more than one of the same printer model connected on your network, the Ethernet address (MAC address) will be displayed after the model name.

- 6 When this screen appears, click **OK**.

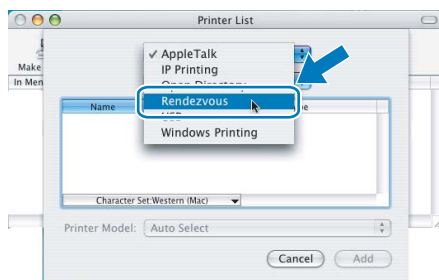


For Mac OS® X 10.3 or greater users:
Setup is now complete.

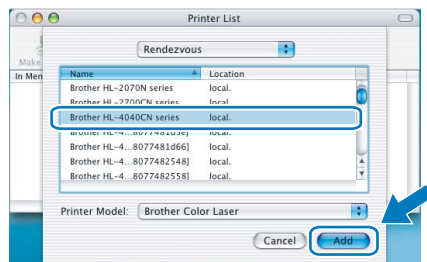
- 7 When this screen appears, click **Add**.



- 8 Make the following selection.



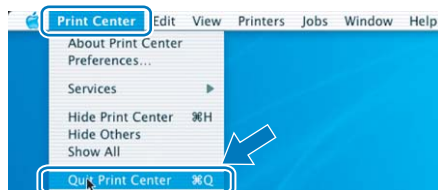
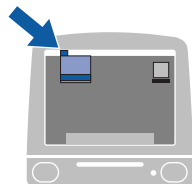
- 9 Choose your printer, and then click **Add**.



Note

If there is more than one of the same printer model connected on your network, the Ethernet address (MAC address) will be displayed after the model name.

- 10 Click **Print Center**, then **Quit Print Center**.



For Mac OS® X 10.2.4 to 10.2.8 users:
Setup is now complete.

BRAdmin Light utility (For Windows® users)

The BRAdmin Light is a utility for initial setup of Brother network connected devices. It can also search for Brother products on your network, view the status and configure basic network settings, such as IP address. For more information on BRAdmin Light, visit us at <http://solutions.brother.com>.

Note

- If you require more advanced printer management, use the latest Brother BRAdmin Professional utility version that is available as a download from <http://solutions.brother.com>.
- If you are using Personal Firewall software (e.g. Windows Firewall), disable it. Once you are sure that you can print, re-start your Personal Firewall software.

Installing the BRAdmin Light configuration utility

Note

The default password for the print server is 'access'. You can use BRAdmin Light to change this password.

- Click **Install Other Drivers or Utilities** on the menu screen.

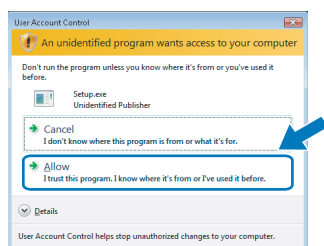


- Click **BRAdmin Light** and follow the on-screen instructions.



Note

For Windows Vista™, when the User Account Control screen appears, click **Allow**.

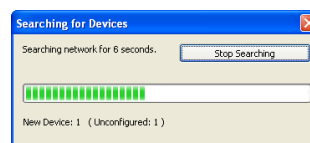


Setting your IP address, Subnet Mask and Gateway using BRAdmin Light

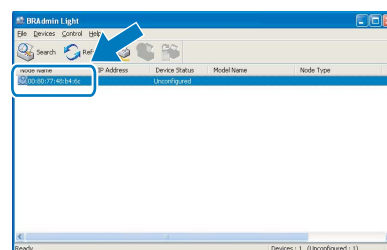
Note

If you have a DHCP/BOOTP/RARP server in your network, you don't have to do the following operation. Because the print server will automatically obtain its IP address.

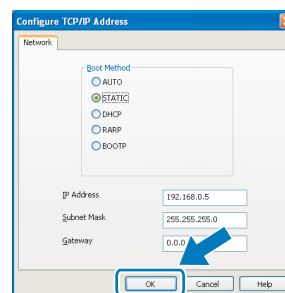
- Start BRAdmin Light. It will search for new devices automatically.



- Double-click the unconfigured device.



- Choose **STATIC** for the **Boot Method**. Enter the **IP Address**, **Subnet Mask** and **Gateway**, and then click **OK**.



- The address information will be saved to the printer.

BRAdmin Light utility (For Mac OS® X users)

The BRAdmin Light is a utility for initial setup of Brother network connected devices. It can also search for Brother products on your network, view the status and configure basic network settings, such as IP address from a computer running Mac OS® X 10.2.4 or greater.

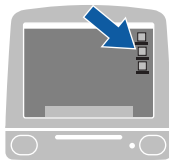
The BRAdmin Light software will be installed automatically when you install the printer driver. If you have already installed the printer driver, you don't have to install it again. For more information on BRAdmin Light, visit us at <http://solutions.brother.com>.

Setting your IP address, Subnet Mask and Gateway using BRAdmin Light

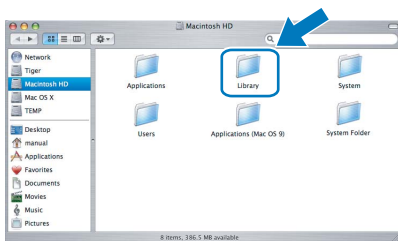
Note

- If you have a DHCP/BOOTP/RARP server in your network, you don't have to do the following operation. The print server will automatically obtain its own IP address.
- Make sure that version 1.4.1_07 or later of Java™ client software is installed on your computer.
- The default password for the print server is 'access'. You can use BRAdmin Light to change this password.

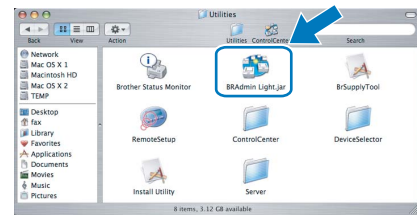
- 1 Double-click the **Macintosh HD** icon on your desktop.



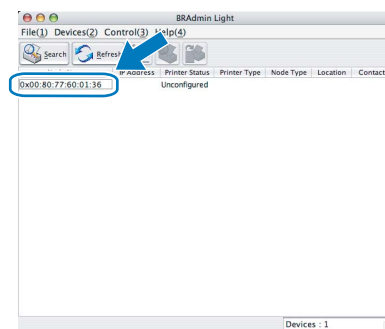
- 2 Choose **Library**, **Printers**, **Brother** and then **Utilities**.



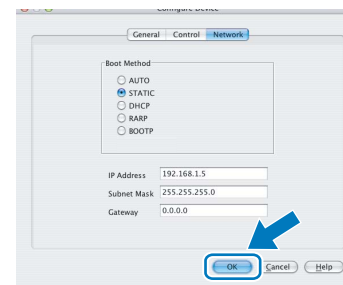
- 3 Double click the file **BRAdmin Light.jar** and run the software. BRAdmin Light will then search for new devices automatically.



- 4 Double-click the unconfigured device.



- 5 Choose **STATIC** for the **BOOT Method**. Enter the **IP Address**, **Subnet Mask** and **Gateway**, and then click **OK**.



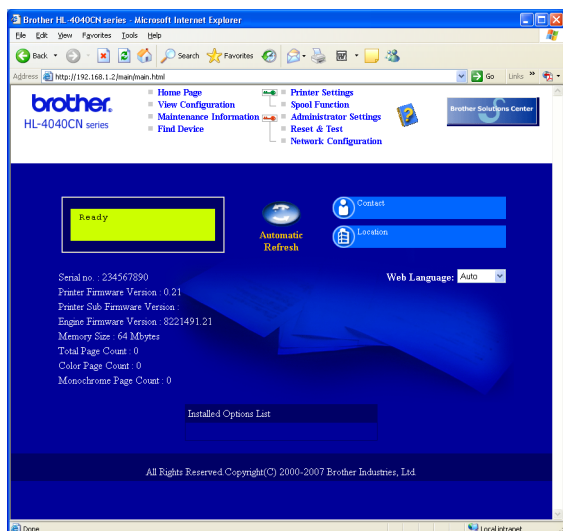
- 6 The address information will be saved to the printer.

Web Based Management (web browser)

The Brother print server is equipped with a web server that allows you to monitor its status or change some of its configuration settings, using HTTP (Hyper Text Transfer Protocol).

Note

- The User Name is 'admin' and the default password is 'access'. You can use a web browser to change this password.
- We recommend Microsoft Internet Explorer 6.0® (or higher) or Firefox® 1.0 (or higher) for Windows® and Safari™ 1.0 for Macintosh®. Please also make sure that JavaScript and Cookie are always enabled in whichever browser you use. We recommend you upgrade to Safari™ 1.2 or higher to enable JavaScript. To use a web browser, you will need to know the IP address of the print server.



- 1 Type `http://printer_ip_address/` into your browser.
(Where `printer_ip_address` is the IP address or the print server name)
- For example: `http://192.168.1.2/`
(if the printer's IP address is 192.168.1.2.)



See Chapter 2 of the Network User's Guide.

Network default settings

To restore all network settings of the internal print server to default, follow the steps below.

- 1 Press the + or – button to choose LAN.
Press OK.

Select ▲▼ or OK
LAN

- 2 Press the + or – button to choose Factory Reset.
Press OK.

LAN
Factory Reset

- 3 Press OK again.

Factory Reset
OK?

Print the Printer Settings Page

The Printer Settings Page lists all the current printer settings, including network settings. To print the printer settings page:

- 1 Press the + or – button to choose Machine Info..
Press OK.

Select ▲▼ or OK
Machine Info.

- 2 Press OK again.

Machine Info.
Print Settings

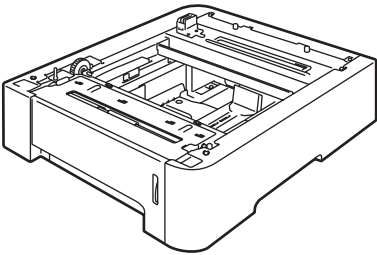
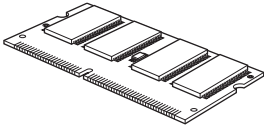
- 3 Press OK again to print the Printer Settings Page.

Options

The printer has the following optional accessories. You can expand the capabilities of the printer by adding these items.

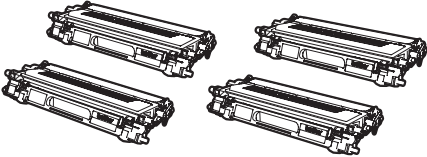
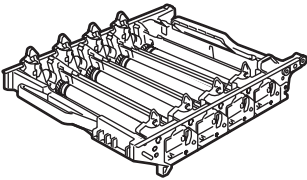
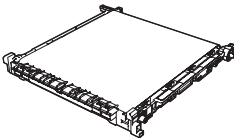
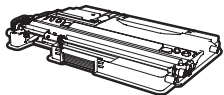


See Chapter 5 of the User's Guide on the CD-ROM.

Lower tray unit	DIMM memory
LT-100CL	
	
The lower paper tray unit can hold up to 500 sheets of paper. When the lower tray unit is installed, the printer expands total input capacity up to 800 sheets.	You can expand the memory by installing the (144-pin DIMM) memory module.

Consumables

When the time comes to replace consumable items, an error message will be indicated on the LCD. For more information about the consumables for your printer, visit us at <http://solutions.brother.com> or contact your local Brother reseller.

Toner cartridge	Drum unit
<Standard Toner> TN-170C/TN-170M/TN-170Y/TN-170BK <High-Yield Toner> TN-175C/TN-175M/TN-175Y/TN-175BK	DR-170CL
	
Belt unit (BU-100CL)	Waste toner box (WT-100CL)
BU-100CL	WT-100CL
	



See Chapter 6 of the User's Guide on the CD-ROM.

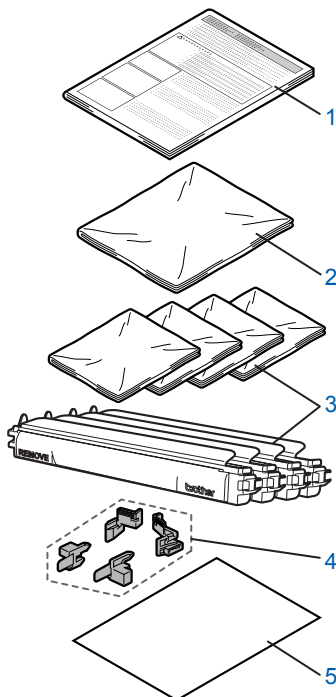
Shipment of the printer

! Caution

- Once your printer has been set up and used, we do not recommend that it be moved or shipped unless absolutely necessary.
- Color laser printers are complex printing devices. Moving the printer or shipping it without properly removing the installed supplies can result in SEVERE damage to the printer. As a result, your printer may not operate properly afterwards.
- If the printer must be shipped, see Repacking Instructions on this page, for step-by-step instructions on how to properly prepare your printer for transport.
- Failure to properly prepare the printer for shipping according to the instructions on this page may VOID YOUR WARRANTY.
- If for any reason you must move or ship your printer, carefully re-pack the printer in the original packing material to avoid any damage during transport. The printer should also be adequately insured with the shipping company you choose.

Repacking Instructions

Make sure that you have the following parts for repacking:



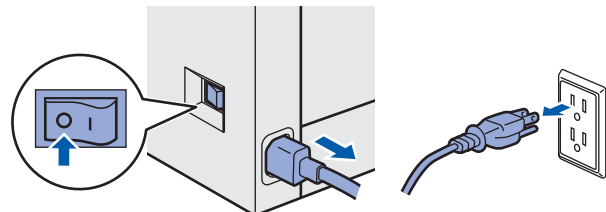
- 1 Insertion sheet for repacking
- 2 Plastic bag for the waste toner box
- 3 Orange protective cover, Plastic bag that the toner cartridge originally came in (4 pieces of each)
- 4 Orange packing material for locking the drum unit and the belt unit (4 pieces)
- 5 A piece of paper (Letter or A4) to protect the belt unit (Supplied by the user)

Repacking the printer

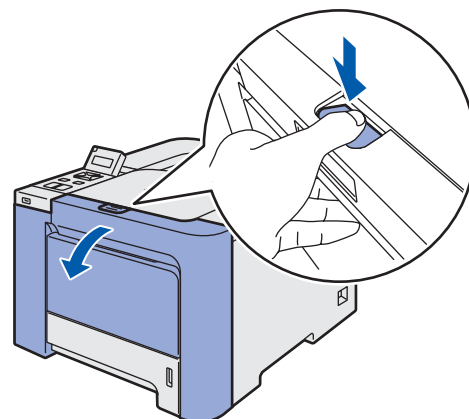
! Warning

This printer is heavy and weights approximately 64.2 lb. (29.1 kg). To prevent injuries use at least two people to lift the printer. Be careful not to pinch your fingers when you put the printer down.

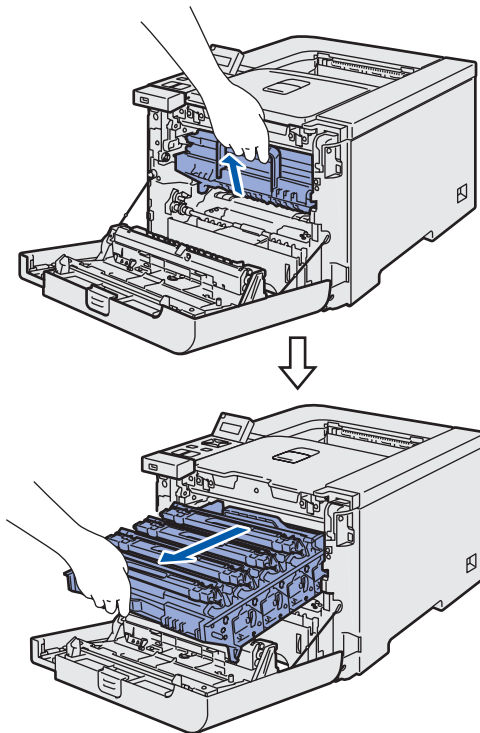
- 1 Turn off the power switch, and unplug all the cables from the printer.



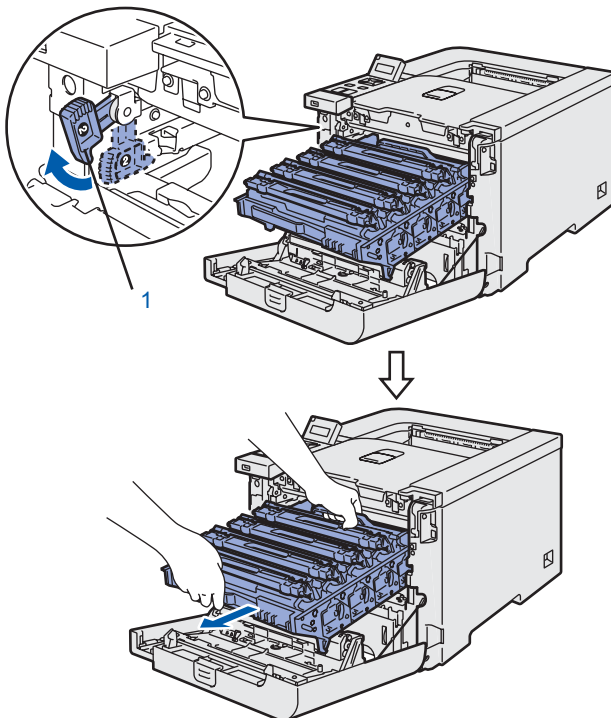
- 2 Press the front cover release button and then open the front cover.



- 3** Hold the green handle of the drum unit. Lift the drum unit up and then pull it out until it stops.

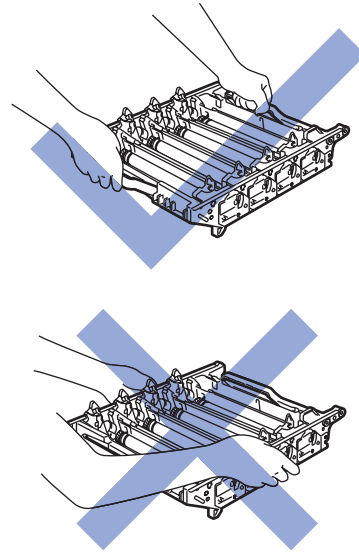


- 4** Release the gray lock lever (1) that is on the left side of the printer. Pull the drum unit completely out using the green handles on the drum unit.

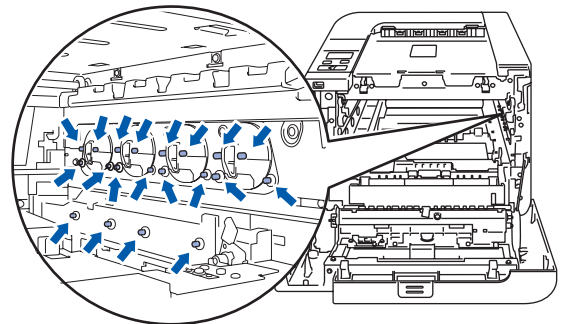


! Caution

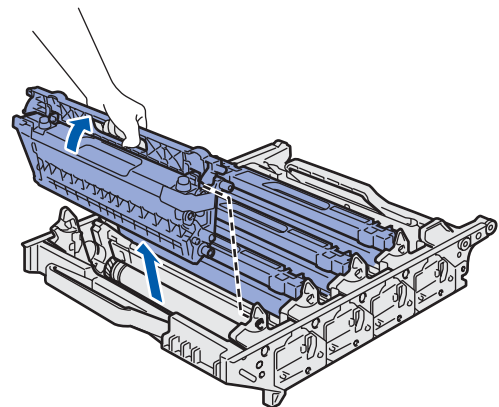
- Hold the green handles of the drum unit when you carry it. **DO NOT** hold the sides of the drum unit.



- We recommend that you place the drum unit on a clean, flat surface with a piece of disposable paper underneath it in case you accidentally spill or scatter toner.
- To prevent damage to the printer from static electricity, **DO NOT** touch the electrodes shown in the illustration.

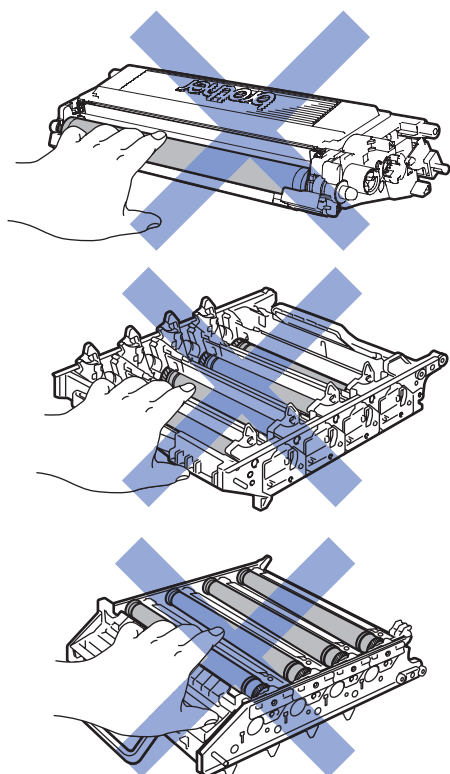


- 5** Hold the handle of the toner cartridge and pull it out of the drum unit. Repeat this for all the toner cartridges.

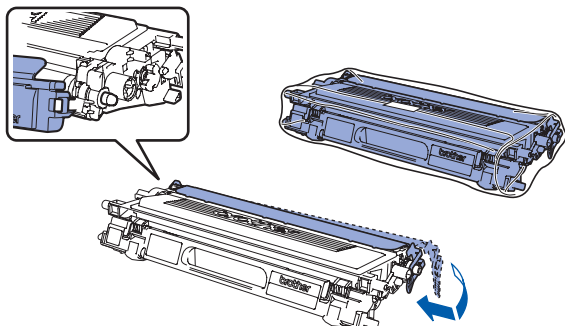


! Caution

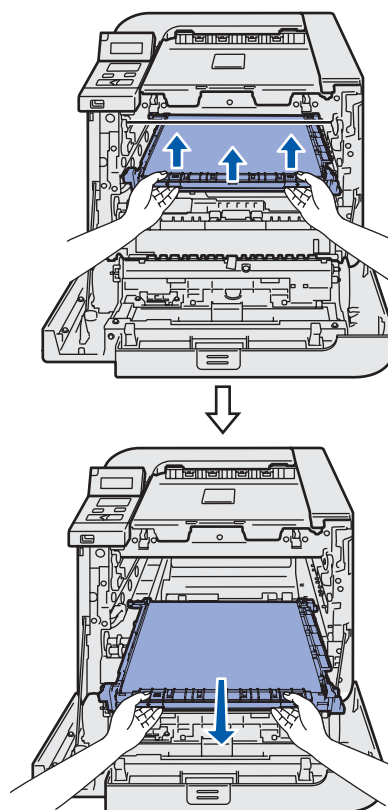
To avoid print quality problems, DO NOT touch the shaded parts shown in the illustrations.



- 6** Attach the original orange protective cover to each of the toner cartridges. Place each of the toner cartridges into the plastic bag included in the carton.



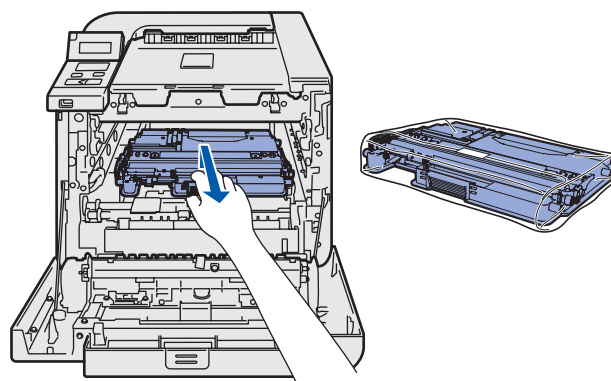
- 7** Hold the green parts of the belt unit with both hands and lift the belt unit up, then pull it out.



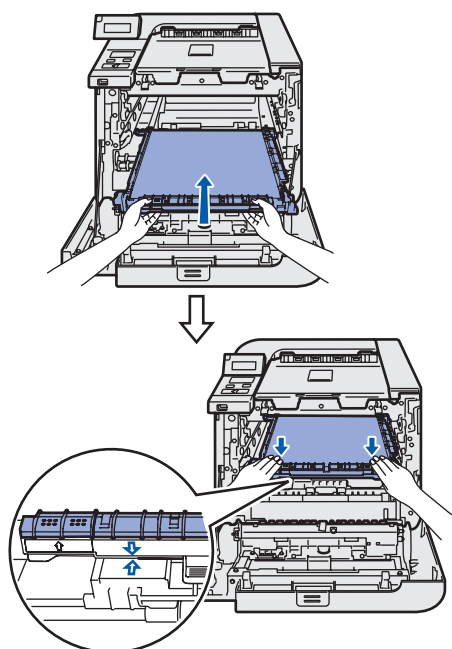
Note

We recommend that you put the belt unit on a clean, flat surface with a piece of disposable paper underneath it in case you accidentally spill or scatter toner.

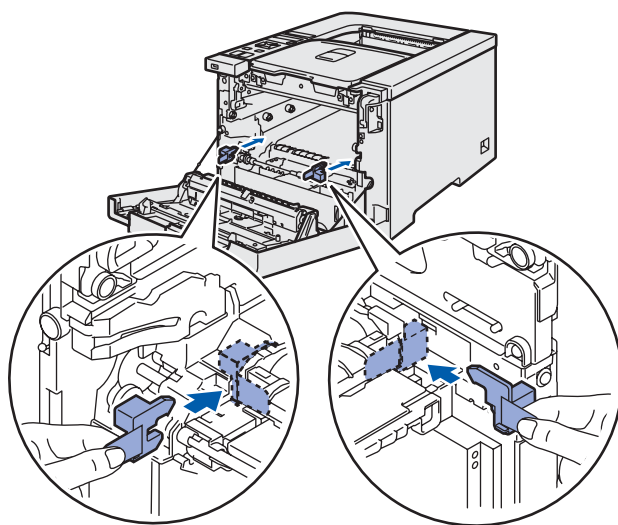
- 8** Remove the waste toner box from the printer using the green handle and place it into the plastic bag included in the carton.



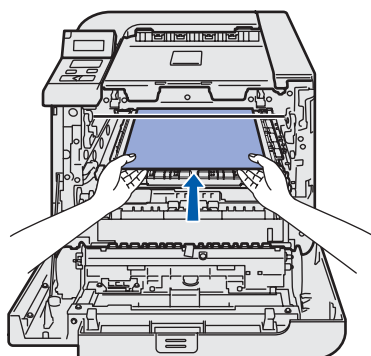
- 9** Put the belt unit back in the printer. Match the ↓ mark on the belt unit to the ↑ mark on the printer. Push down on the green area of the belt unit to lock it in place.



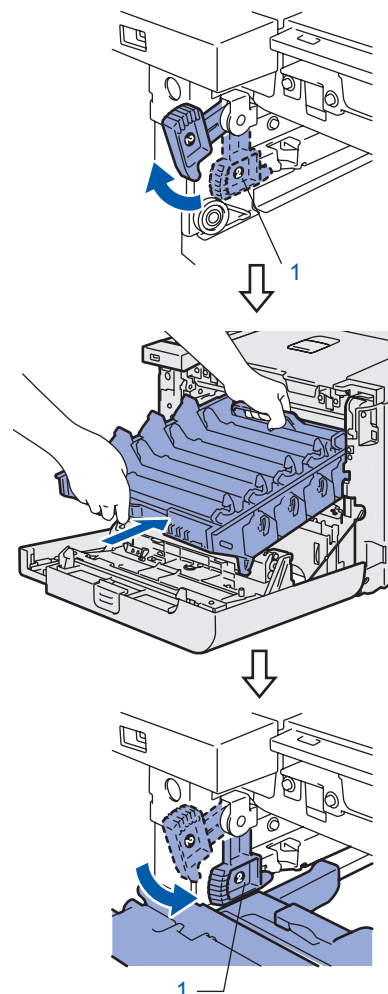
- 10** Insert the original orange packing material for locking the belt unit as shown in the illustration



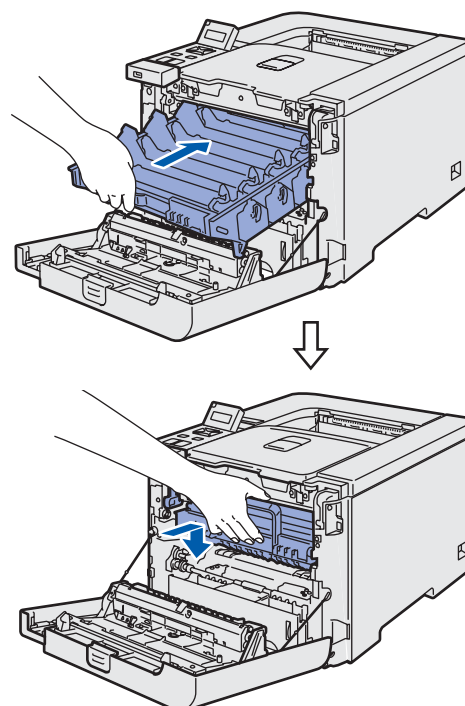
- 11** Put a piece of paper (letter or A4) on the belt unit to prevent damage to the belt unit.



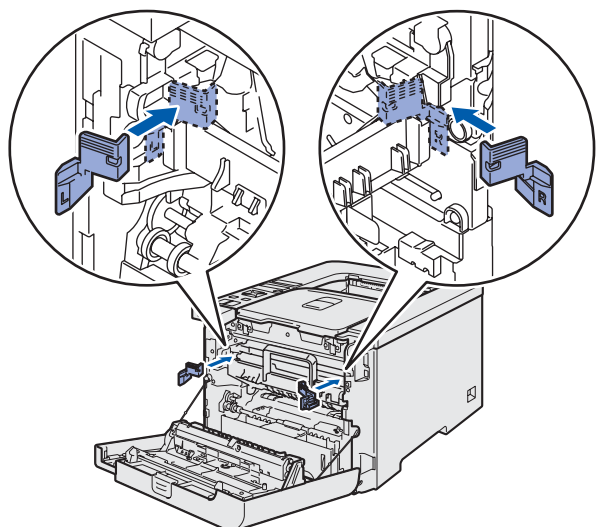
- 12** Make sure that the gray lock lever (1) is in the up position and put the drum unit in the printer. Push down the gray lock lever (1).



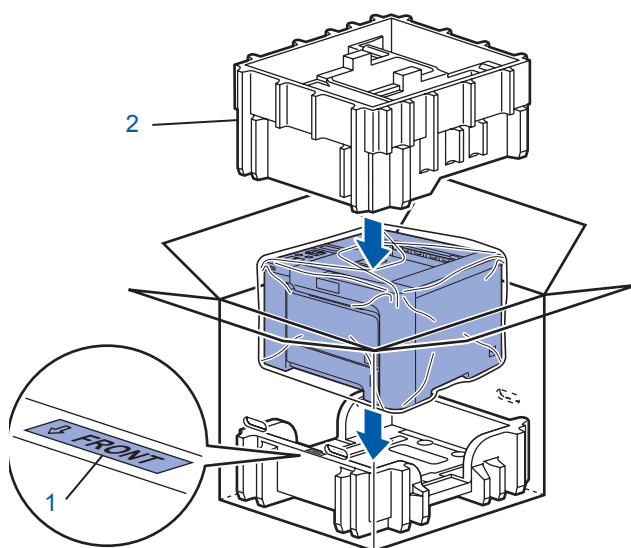
- 13** Push the drum unit in until it stops.



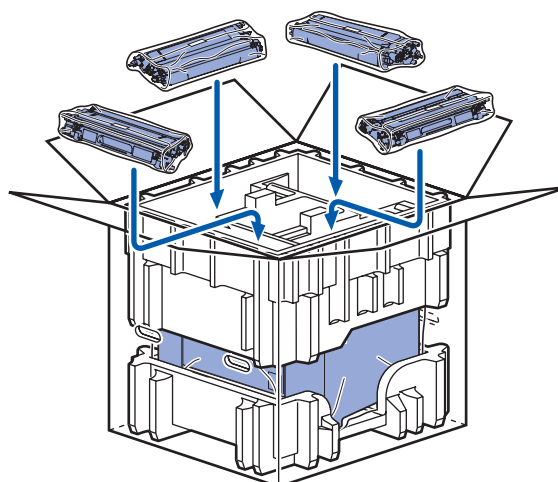
- 14** Insert the original orange packing material for the drum unit as shown in the illustration, and then close the front cover.



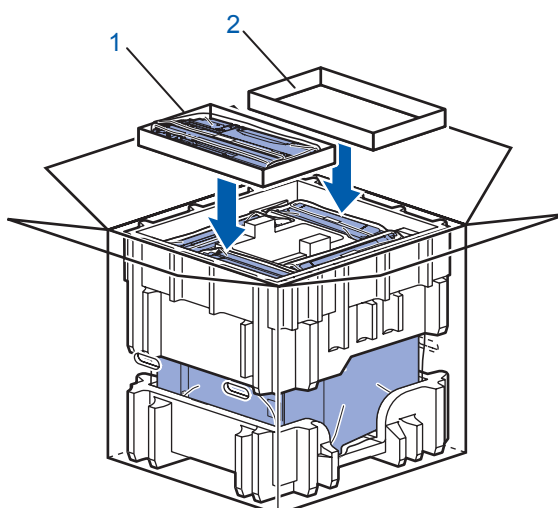
- 15** Two people should place the printer into the plastic bag and put the printer and the Styrofoam pieces into the carton. Match the front side of the printer to the "FRONT" mark (1) on the Styrofoam pieces. Put the Styrofoam piece for the toner cartridges (2) on top of the printer.



- 16** Put the toner cartridges into the Styrofoam piece.



- 17** Put the two carton trays (1) (2) on the top and put the waste toner box in the tray placed towards the front side of the printer (1).



- 18** Close the carton and tape it shut.

Trademarks

The Brother logo is a registered trademark of Brother Industries, Ltd.

Apple, the Apple Logo, Macintosh and TrueType are registered trademarks of Apple Inc. in the United States and other countries.

Microsoft, MS-DOS and Windows are registered trademarks of Microsoft Corporation in the U.S. and other countries.

Windows Vista is either a registered trademark or trademark of Microsoft Corporation in the United States and/or other countries.

Java and all Java-based trademarks and logos are trademarks or registered trademarks of Sun Microsystems, Inc. in the United States and other countries.

All other terms and brand and product names mentioned in this Quick Setup Guide are registered trademarks of their respective companies.

Compilation and Publication

This manual has been compiled and published, under the supervision of Brother Industries Ltd., covering the latest product descriptions and specifications.

The contents of this manual and the specifications of this product are subject to change without notice.

Brother reserves the right to make changes without notice in the specifications and materials contained herein and shall not be responsible for any damages (including consequential) caused by reliance on the materials presented, including but not limited to typographical and other errors relating to the publication.

This product is designed for use in a professional environment.

Copyright and License

© 2007 Brother Industries, Ltd. © 1998-2007 TROY Group, Inc. © 1983-2007 PACIFIC SOFTWARES INC. This product includes the "KASAGO TCP/IP" software developed by Elmic Systems, Inc. © 2007 Devicescape Software, Inc. This product includes RSA BSAFE Cryptographic software from RSA Security Inc. ALL RIGHTS RESERVED.

