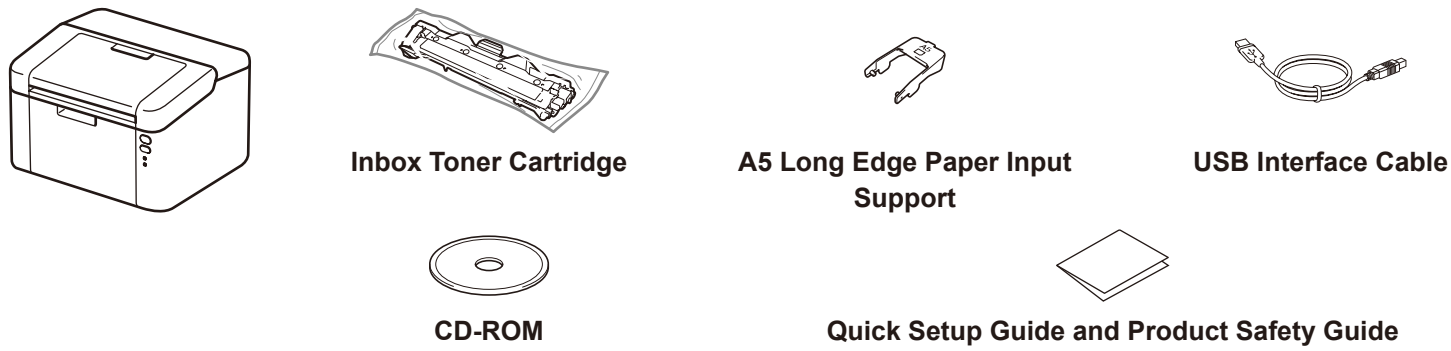


Unpack the machine and check the components



Read the Product Safety Guide first, then read this Quick Setup Guide for the correct installation procedure.

NOTE:

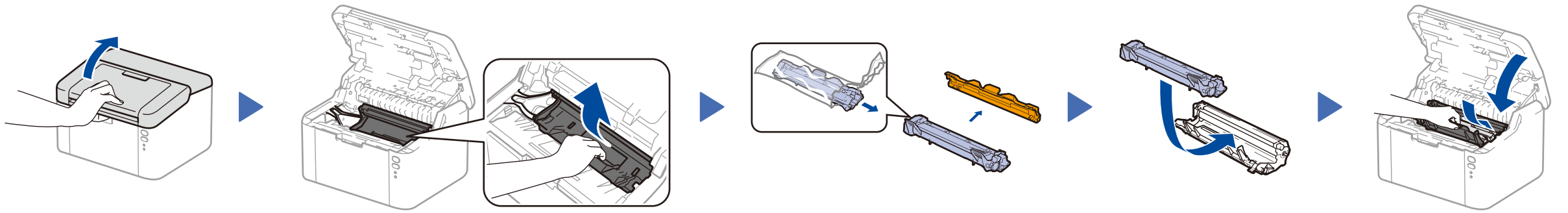
USB cable

We recommend using a USB 2.0 cable (Type A/B) that is no more than 2 metres long.

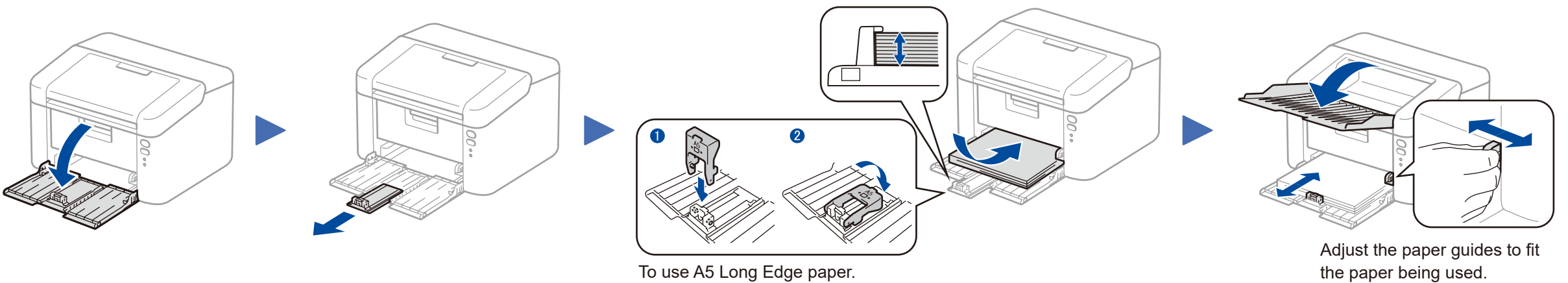
Secure Network Access

Your machine's default password is on the label on the back of the machine (preceded by "Pwd"). We strongly recommend you change it to protect your machine from unauthorised access.

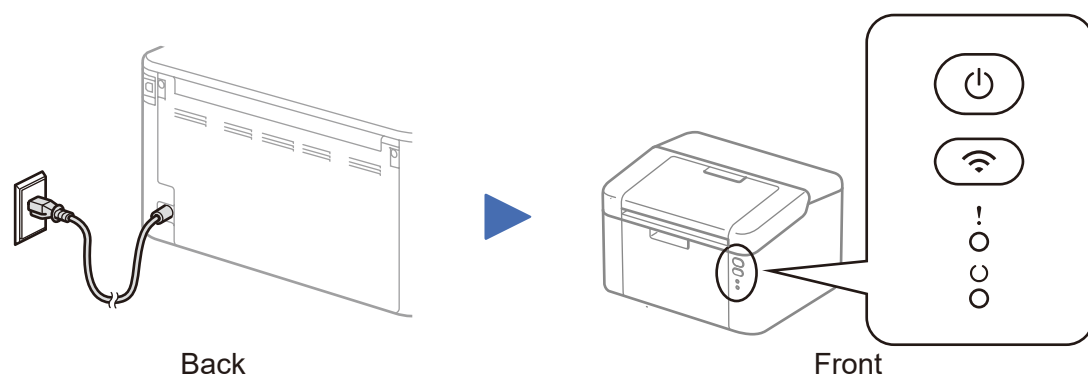
1 Remove the packing materials and install the toner cartridge



2 Load paper in the paper tray



3 Connect the power cord and turn on the machine



Printer LED Indications

Blinking: ☀ or 🌱 ON: ● OFF: ○

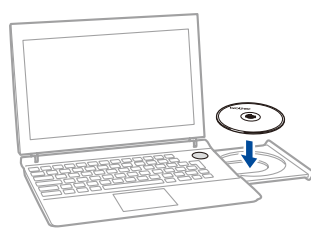
	POWER OFF	READY	SLEEP DEEP SLEEP	WARMING UP COOLING DOWN	RECEIVING DATA DATA REMAINING	TONER LOW	REPLACE TONER	PAPER JAM	DRUM END SOON REPLACE DRUM
!	○	○	○	○	○	☀ ○	☀ ○	☀ ☀ ○	☀ ☀ ☀ ○
○	○	●	● Dimmed	🌱 1 second interval	🌱 0.5 second interval	●	○	○	●

4 Connect the machine to your computer/mobile device

- Windows® PC with a CD-ROM drive, go to step **4A**
- Windows® PC without a CD-ROM drive, go to step **4B**
- Macintosh, go to step **4B**
- Mobile device users with a WPS/AOSS™-supported access point/router, go to step **4C**

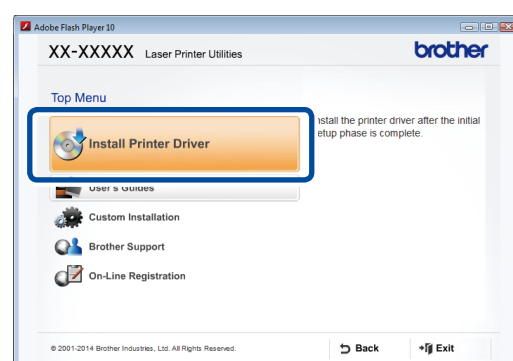


Configuration using the CD-ROM (Windows®)



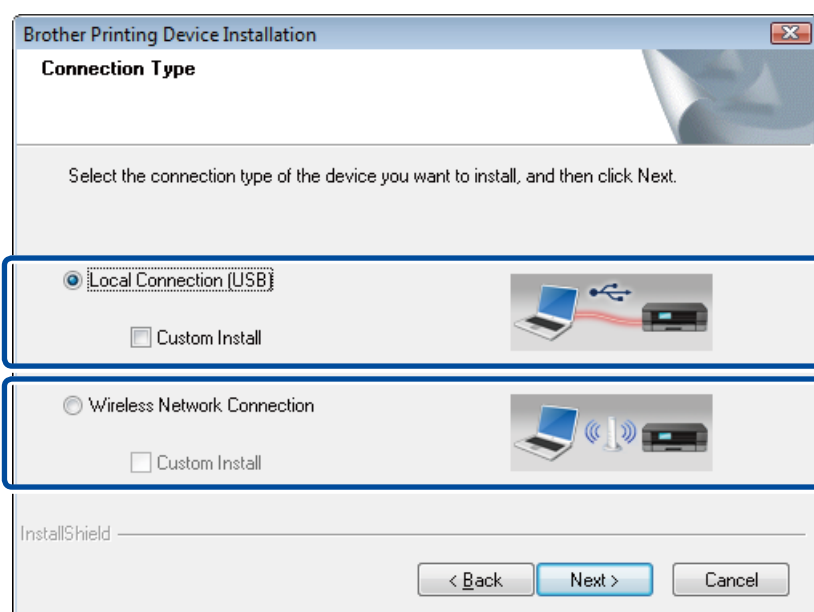
NOTE:

If the Brother screen does not appear automatically, go to **Computer (My Computer)**.
(For Windows® 8: click the (File Explorer) icon on the taskbar, and then go to **Computer**.)
Double-click the CD-ROM icon, and then double-click **start.exe**.



Follow the on-screen instructions until the **Connection Type** screen appears.

Connection Type



For USB Connection

For Wireless Network Connection
We recommend preparing a USB cable to use temporarily during the wireless setup.

Follow the on-screen instructions to continue installation.

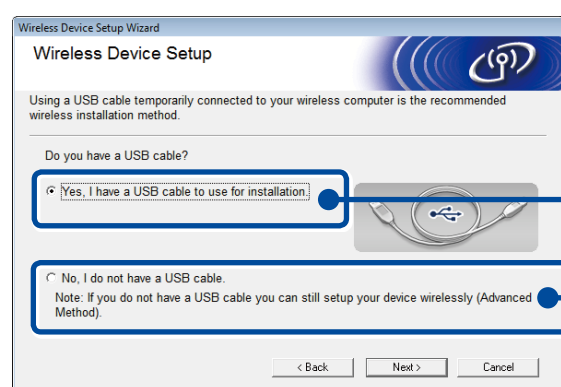
Finish

NOTE:

If connection is unsuccessful, repeat this step.



Wireless Network Connection



[Recommended]

Select this option if you have a USB cable to use temporarily for wireless setup.

Select this option if you do not have a USB cable.

Follow the on-screen instructions to continue installation.

Finish

NOTE:

If connection is unsuccessful, repeat this step.



Configuration without using the CD-ROM (Windows® without CD-ROM drive or Macintosh)

Download the full driver and software package from the Brother Solutions Center.

(For Windows®) solutions.brother.com/windows

(For Macintosh) solutions.brother.com/mac

After you download the driver and software package, follow the on-screen instructions until the **Connection Type** screen appears. Refer to **4A Configuration using the CD-ROM (Windows®)**.

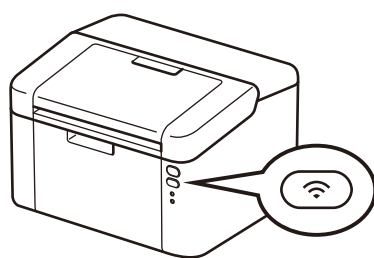


One-push wireless setup for mobile devices

If your wireless LAN access point/router supports automatic wireless (one-push) setup (WPS/AOSS™), you can set up your machine without using a computer.



Press the WPS or AOSS™ button on your wireless LAN access point/router.

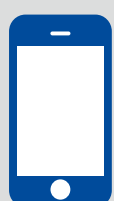


Press and hold the WiFi button on your machine for about 2 seconds. The WiFi button will light up when connected.

Wireless setup is now complete.

NOTE:

Before you can use your machine with your mobile device, download "Brother iPrint&Scan."



Print using your mobile device

Download "Brother iPrint&Scan" to start using your machine with mobile devices.



solutions.brother.com/ips