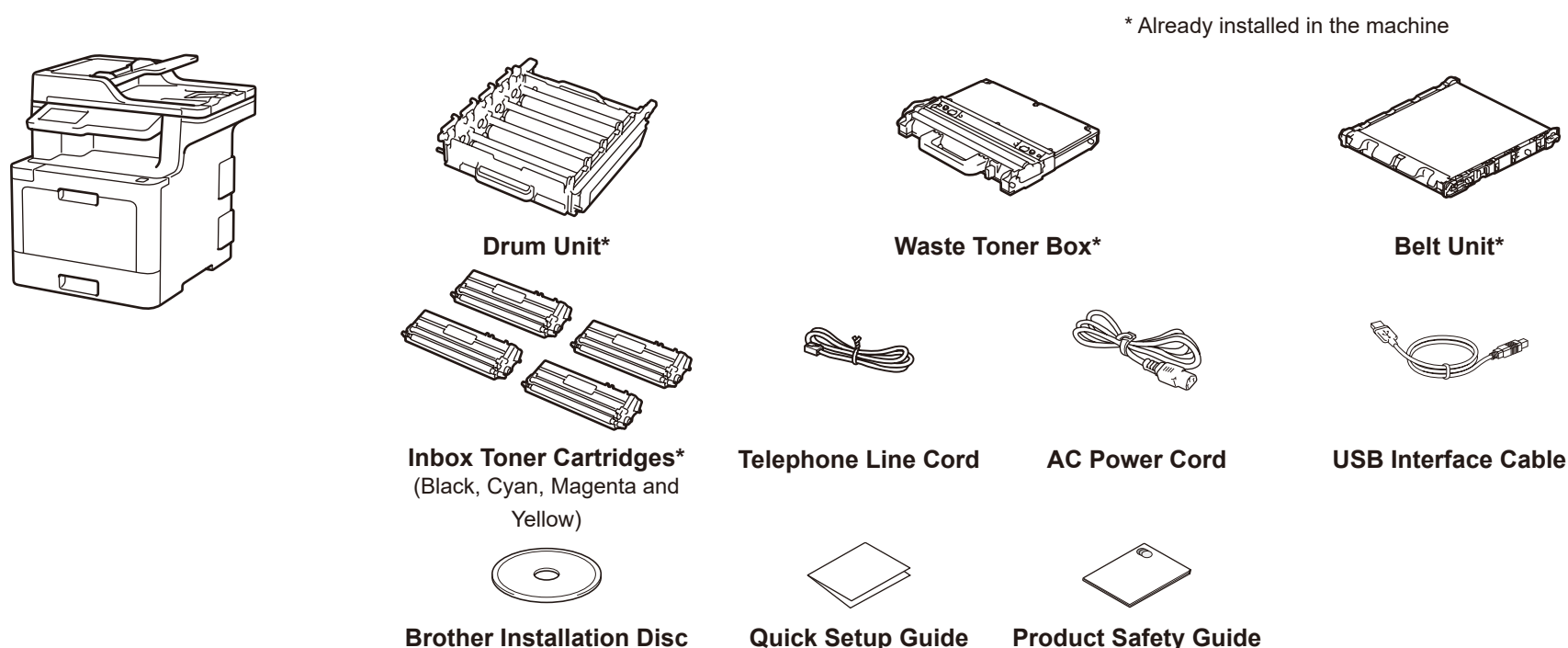


Unpack the machine and check the components



NOTE:

- The available connection interfaces vary depending on the model.
- Interface cables are not included. You must purchase the correct interface cable if you require one.

USB cable

We recommend using a USB 2.0 cable (Type A/B) that is no more than 2 metres long.

Network cable

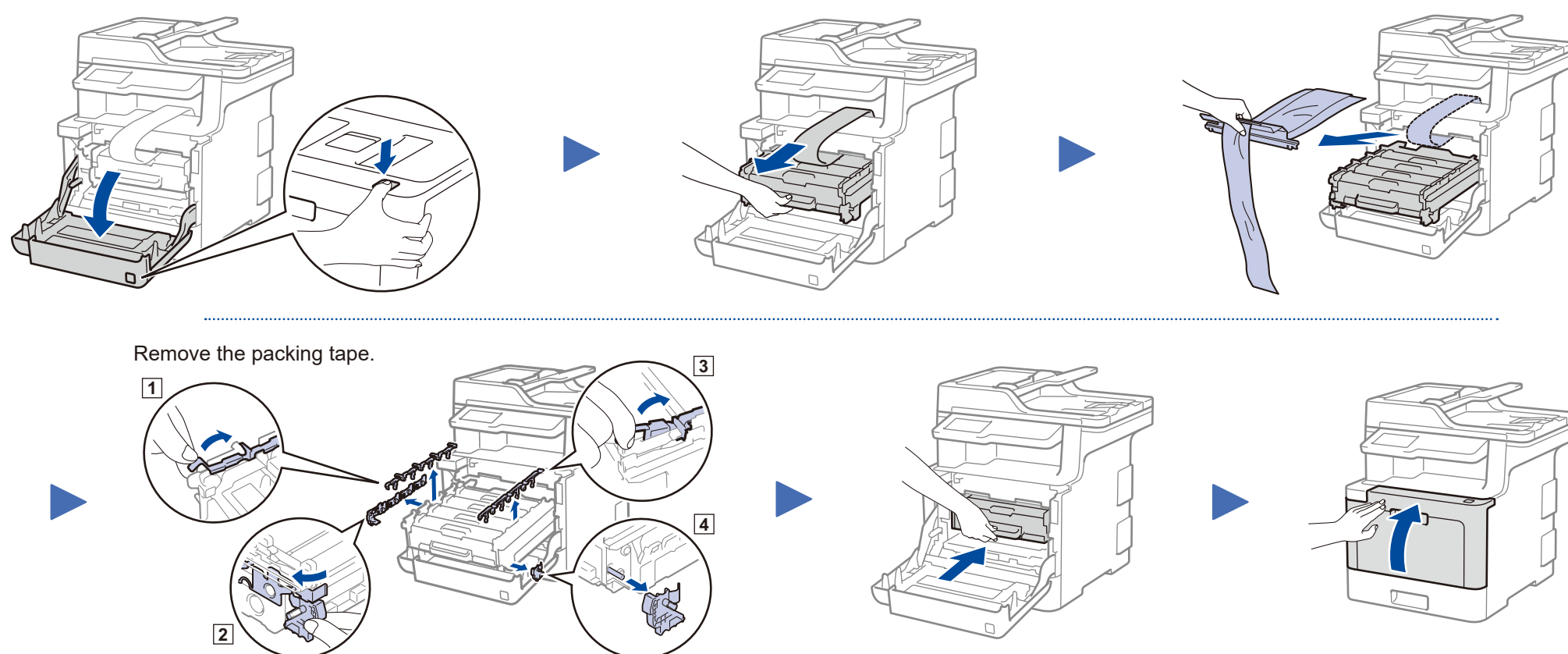
Use a straight-through Category 5e (or greater) twisted-pair cable.

- The illustrations in this Quick Setup Guide show the MFC-L8900CDW.

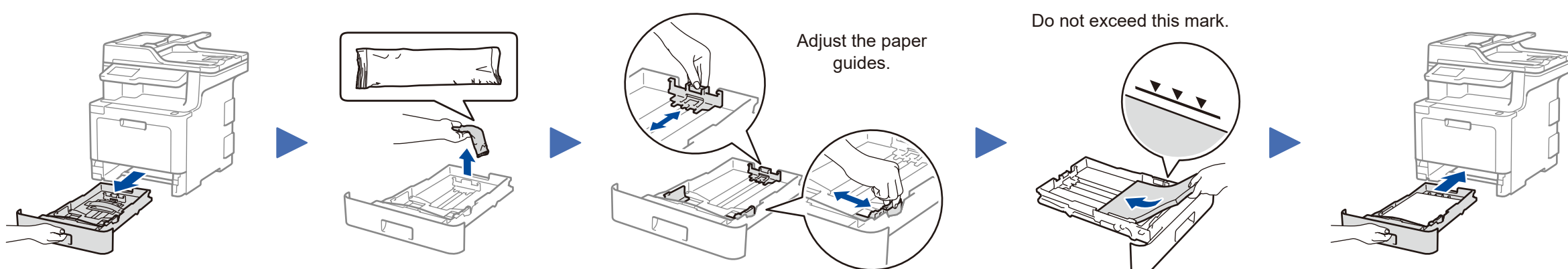
Secure Network Access

Your machine's default password is on the label on the back of the machine (preceded by "Pwd"). We strongly recommend you change it to protect your machine from unauthorised access.

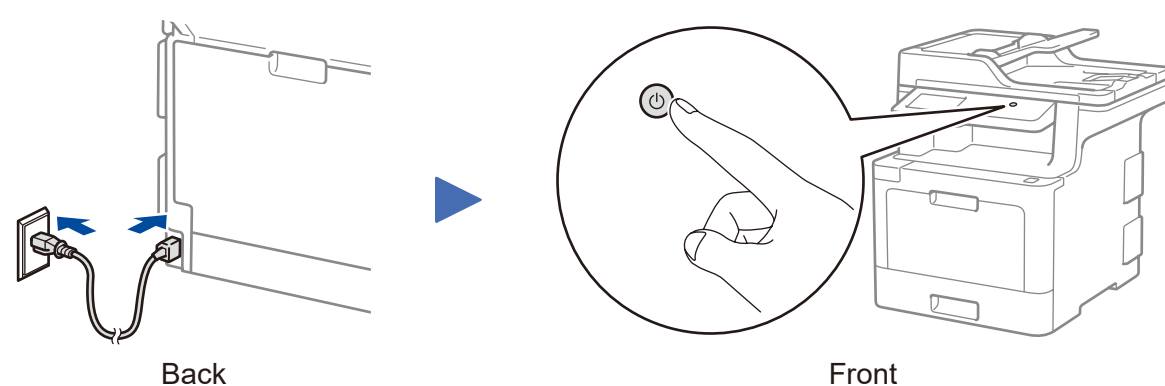
1 Remove the packing materials and install the drum unit and toner cartridge assembly



2 Load paper in the paper tray

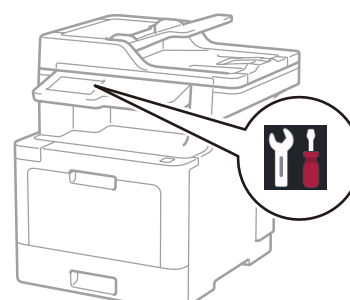


3 Connect the power cord and turn the machine on




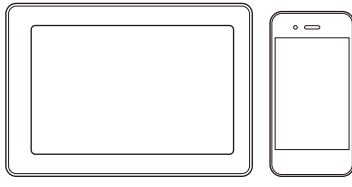
4 Select your language (if needed)

- On the machine's Touchscreen, press [所有设置] (All Settings) > [初始设置] (Initial Setup) > [语言] (Local Language).
- Press your language.
- Press .

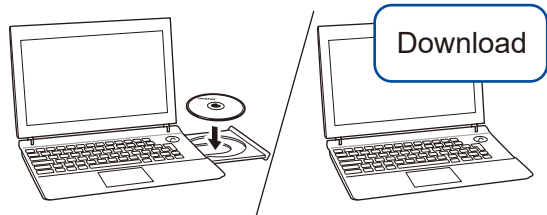


5 Select a device to connect to your machine

Computer

Go to **6** and follow the instructions.

Mobile Device

Go to **7** and follow the instructions.

6 Connect your computer



Put the installation disc into your CD/DVD drive, or download the Full Driver & Software Package at:

www.95105369.com

If you are using a recently released operating system on your computer, visit the above websites for updated driver and software information.

Brother regularly updates firmware to add features and apply bug fixes. To check for the latest firmware, visit solutions.brother.com/up3.

▶ Follow the on-screen instructions and prompts.

▶ Finished

For Windows®:
If the Brother screen does not appear automatically, go to **Computer (This PC)**. Double-click the CD/DVD-ROM icon, and then double-click **start.exe**.

For Macintosh:
For full driver functionality, we recommend choosing the **CUPS driver** when adding a printer.

Can't Connect? Check the following:



Wireless network



Wired network



USB connection

▶ Restart your wireless access point/router (if possible).

▶ Disconnect the cable.

▶ Restart your machine and computer, and then go to **6**.

▶ If still not successful, go to **7**.

▶ If still not successful, visit www.95105369.com for FAQs & Troubleshooting.

7 Alternative wireless setup

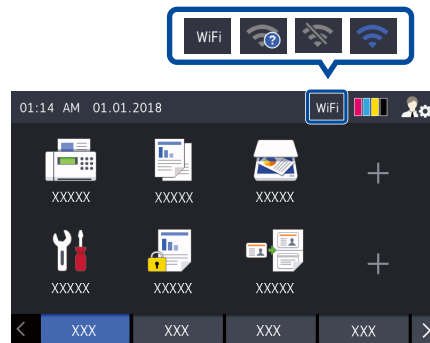
Find your SSID (Network Name) and Network Key (Password) on your wireless access point/router and write them in the table provided below.

SSID (Network Name)	
Network Key (Password)	

SSID: XXXXXXXX
Network key: XXXX

If you cannot find this information, ask your network administrator or wireless access point/router manufacturer.

Press **WiFi** > [设置向导] (Setup Wizard)
> [是] (Yes).



Select the SSID (Network Name) for your access point/router and enter the Network Key (Password).

When the wireless setup is successful, the Touchscreen displays [已连接] (Connected).

If setup is not successful, restart your Brother machine and your wireless access point/router, and repeat **7**.

For Computer

Go to **6** to install software.

For Mobile Device

Go to **8** to install apps.

8 Print or scan using your mobile device

Your mobile device must be connected to the same wireless network as your Brother machine.



AirPrint is available for Apple device users. You do not need to download any software to use AirPrint. For more information, see the *Online User's Guide*.



Download and install our free application **Brother iPrint&Scan**. Visit www.95105369.com.

Optional apps

You can print from and scan to your mobile device using various apps. For instructions, see the *Online User's Guide*.

